

Model JH

High Pressure Digital Pressure Gauge



DESCRIPTION

Using high pressure autoclave fittings, the Series JH digital pressure test gauge with 0.2 % full scale accuracy uses transducer technology and a stainless steel diaphragm for high over pressure protection. The transducer technology provides enhanced accuracy over the entire pressure range. The JH has no moving parts and thus, may provide a long life with fewer re-calibrations. The stainless steel NEMA construction also provides EMI and RFI protection.

The JH provides high resolution with an easy to read digital display. There are no operator errors due to interpolation of hash marks or parallax errors. The units can be scaled to read in various engineering units. PSI pressures are read x 10 with the 4½-digit display. The Model JHB provides a 4 mA to 20 mA, two-wire output. The Model JHE provides a 0 Vdc to 5 Vdc output. The Model JHR has two programmable limits and relays with no

analog output. The Model JHX provides a 0 Vdc to 5 Vdc output with two programmable limits and relays for process control or alarm indication. The Model JHW is powered by one or two common 9 V alkaline batteries. The Model JHT is powered by a 110 Vac adapter. The JHV, JHB, JHE, JHR and JHX models are powered by an 11 Vdc to 32 Vdc power supply.

Each unit has a membrane face with raised buttons and tactile feedback for setup and operation. The high, low, and clear buttons are easily accessible on this front membrane. Zero adjustment and zero offset/tare functions are standard on each unit. Calibration and setup parameters are stored on a memory chip to protect from loss even when power is interrupted. Unauthorized set ups and calibrations are also blocked with internal security. Various combinations of the front panel buttons can be deactivated.

FEATURES

- Pressure ranges from 15000 psi to 60000 psi gage
- Two programmable limits and relays (optional)
- Accuracy - 0.2 % full scale
- High and low detection - Microprocessor based
- 4 mA to 20 mA (two-wire) and 0 Vdc to 5 Vdc analog outputs (optional)
- Customer recalibration
- 4½ digit display with 0.5 in height
- Zero offset/tare
- On/off switch disable feature
- Two programmable limits and relays (optional)
- NEMA 4 rating (optional)
- NIST statement (standard)
- NIST traceable (optional)
- Optional carrying case and panel mounting ring

Model JH

PERFORMANCE SPECIFICATIONS

Characteristic	Measure
Linearity and hysteresis	0.2 % full scale (better than test gauge accuracy)
Pressure range 0 psi to	15000, 20000, 25000, 30000, 35000, 40000, 50000, 60000 psi
High and low capture	Standard
Update speed	3 times per sec
Zero and span signal adjustment	Standard: Models JHB, JHE, JHX

ENVIRONMENTAL SPECIFICATIONS

Characteristic	Measure
Temperature, operating	-1 °C to 71 °C [30 °F to 160 °F]

ELECTRICAL SPECIFICATIONS

Characteristic	Measure
Rating	NEMA 2 (optional NEMA 4)
Power, Model JHW	One or two 9 V alkaline batteries (included)
Power, Model JHT	110 Vac adapter @ 60 Hz (included)
Power, Model JHV	11 Vdc to 32 Vdc @ 100 mA (3 ft cable included)
Power, Model JHB	11 Vdc to 32 Vdc (depending on loop resistance) @ 20 mA
Power, Model JHE	11 Vdc to 32 Vdc @ 100 mA
Power, Model JHR	11 Vdc to 32 Vdc @ 100 mA
Power, Model JHX	11 Vdc to 32 Vdc @ 100 mA
Electrical connection	3 ft cable standard: Models JHB, JHE, JHR, JHX, JHV

MECHANICAL SPECIFICATIONS

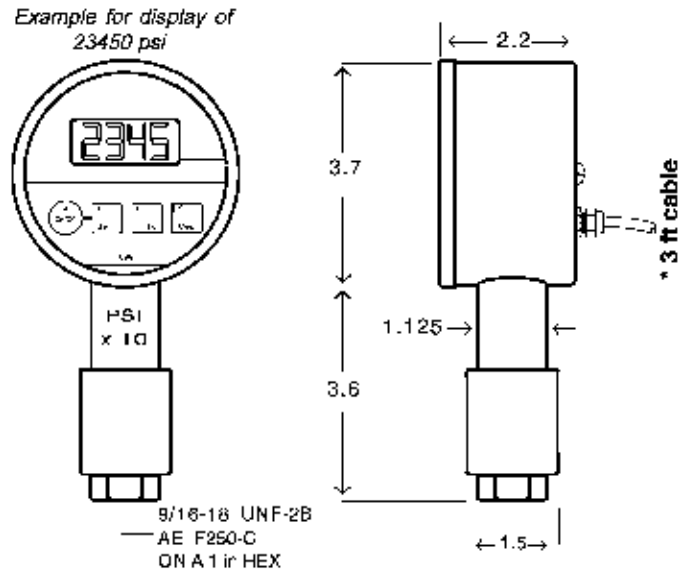
Characteristic	Measure
Diameter	93,98 mm [3.7 in]
Display	4½ LCD digits - 12,7 mm [0.5 in] high
Pressure port	9/16-18 UNF-2B female (per Autoclave AE F 250-C)
Wetted parts	Stainless steel
Case material	Stainless steel
Face membrane	Tactile feedback raised buttons
Calibration data	Stored on memory chip
Low battery indication	Standard: Model JHW
Limits and relays	Models JHR and JHX ¹

ADDITIONAL SPECIFICATIONS

Pressure range (psi)	Maximum safe over pressure (psi) ²	Incremental display steps
0 psi to 15000 psi = 15K	20000	1 x 10
0 psi to 20000 psi = 20K	25000	1 x 10
0 psi to 25000 psi = 25K	31000	1 x 10
0 psi to 30000 psi = 30K	37000	2 x 10
0 psi to 35000 psi = 35K	43000	5 x 10
0 psi to 40000 psi = 40K	50000	5 x 10
0 psi to 50000 psi = 50K	62000	5 x 10
0 psi to 60000 psi = 60K	75000	5 x 10

² Maximum safe overpressure is the pressure which the unit can experience occasionally without the loss of accuracy or permanent damage

MOUNTING DIMENSIONS AND CHARACTERISTICS



* Models JHB, JHE, JHR, JHX, JHV

No cable for battery powered Model JHW

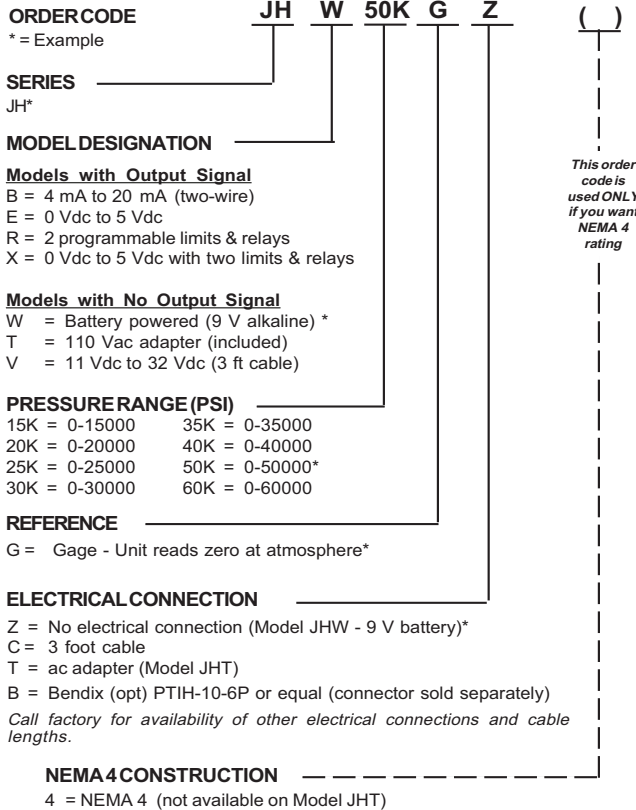
Request certified drawing before designing mountings or fixtures.
Specifications subject to change without notice.

For reference only

Model JH

High Pressure Digital Pressure Gauge

ORDER GUIDE



FIELD SELECTABLE STANDARD UNITS OF MEASURE

Bar = Bar	Ft H2O = Feet of water
MBar = Millibar	In H2O = Inches of water
kPa = Kilopascals	In Hg = Inches of mercury
MPa = Megapascals	mmHg = mm of mercury

Consult factory for other units of measure not listed

NOTES

- The limit/relay models include two LED status indicators on front face and two form C relays (normally open, common, normally closed) that are rated at a maximum 24 Vdc/Vac at 1 A or 48 Vdc/Vac at 1/2 A.

Warranty. Honeywell warrants goods of its manufacture as being free of defective materials and faulty workmanship. Honeywell's standard product warranty applies unless agreed to otherwise by Honeywell in writing; please refer to your order acknowledgement or consult your local sales office for specific warranty details. If warranted goods are returned to Honeywell during the period of coverage, Honeywell will repair or replace, at its option, without charge those items it finds defective. **The foregoing is buyer's sole remedy and is in lieu of all warranties, expressed or implied, including those of merchantability and fitness for a particular purpose. In no event shall Honeywell be liable for consequential, special, or indirect damages.**

While we provide application assistance personally, through our literature and the Honeywell web site, it is up to the customer to determine the suitability of the product in the application.

Specifications may change without notice. The information we supply is believed to be accurate and reliable as of this printing. However, we assume no responsibility for its use.

For more information about Sensing and Control products, visit www.honeywell.com/sensing or call +1-815-235-6847

Email inquiries to info.sc@honeywell.com

WARNING **PERSONAL INJURY**

- DO NOT USE these products as safety or emergency stop devices or in any other application where failure of the product could result in personal injury.

Failure to comply with these instructions could result in death or serious injury.

WARNING **MISUSE OF DOCUMENTATION**

- The information presented in this catalogue is for reference only. DO NOT USE this document as product installation information.
- Complete installation, operation and maintenance information is provided in the instructions supplied with each product.

Failure to comply with these instructions could result in death or serious injury.

Sensing and Control
 Automation and Control Solutions
 Honeywell
 1985 Douglas Drive North
 Golden Valley, MN 55422 USA
 +1-815-235-6847
www.honeywell.com/sensing

Honeywell