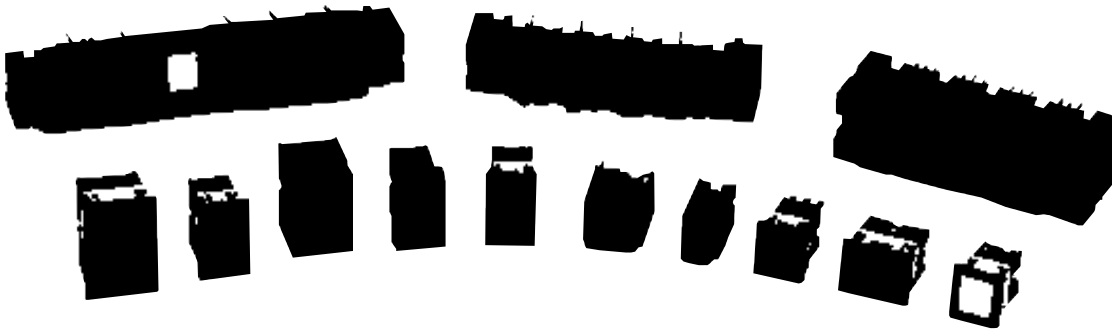


# Manual Switches

## Miniature Manual Line

MML Series



### FEATURES

- Breadth of line offers complete selection of pushbuttons (including encoding options), rockers, paddles and indicators to accommodate different functions and promote operator efficiency.
- Printed wiring board (PWB) or panel mounted switches, plus multi-unit strip mounting, and single level termination for cost-effective installation.
- Tactile feedback imparts a definite feel of switching action.
- Coordinated appearance enhances panel harmony.
- Illumination by long-life LED's and incandescent lamps—for lighted display versatility.
- Solid state, electronic control and power duty switching—for electrical versatility.
- Temperature range:  $-18^{\circ}$  to  $65^{\circ}\text{C}$  ( $0^{\circ}$  to  $149^{\circ}\text{F}$ ).

### DESIGN FREEDOM

Rocker and paddle switches have been added to the MICRO SWITCH MML Miniature Manual Line. They complement AML pushbuttons and indicators, providing you flexibility and design freedom to answer all your miniature manual control requirements. You can choose the actuator option that matches the switch function and natural habit pattern reflex of the operator. You no longer need to compromise quality, appearance, or human factors considerations, because of size constraints.

The MML pushbutton and indicator offering has also been expanded to include new square forms which are small enough to fit in the tightest places.

### MOUNTING FLEXIBILITY

Printed wiring board (PWB) mounted switches can be arranged in individual panel openings, multi-unit strips or matrices, in a common panel cutout. Optional support brackets provide added rigidity for stand-alone PWB mounted devices. Units with bezels and mounting clips can be snap-in mounted from the panel front.

Single level PWB or solder/quick-connect termination throughout makes wiring faster, easier, and more economical. Housings are designed to accommodate washing, before and after wave soldering, to help prevent contamination during printed wiring board installation.

### LIGHTED DISPLAY OPTIONS

Pushbuttons and indicators can be full-face illuminated by LED's or incandescent lamps for high visibility of colors and legends. Inherently rugged, long-life LED's reduce service and maintenance costs. Also, their low drive and inrush current (30 mA or less) reduces costs of drive circuitry.

Rockers can be furnished with colored lenses for illumination by LED's or incandescent lamps.

### CONTROL VERSATILITY

Solid state pushbutton switches with Hall effect integrated circuits interface directly with microprocessors and other logic level devices. Time-proven for billions of cycles, Hall effect IC's provide the ultimate in reliability.

Electronic control pushbutton, rocker, and paddle switches, with gold or silver contacts, handle up to 1 amp; power duty switches, up to 6 amps.

# Manual Switches

## Miniature Manual Line

**MML ENHANCES PANEL HARMONY**  
The attractive clean line design of the total MML offering is coordinated to work in harmony and enhance the visual qualities of your product. MML will help make a good first impression with your customers by blending with other panel components. And also work hard over the long run to maintain operator satisfaction.

**HOW TO ORDER**  
To specify MML catalog listings, refer to the order guides. They are based on a modular cataloging system which gives you the flexibility to choose the combination of feature options that best answers the requirements of your application.

**ORDER GUIDES**

**Solid State Switches**  
MML11 Pushbutton Switches ..... 70

**Electronic Control Switches**  
MML21 Pushbutton Switches ..... 72  
MML23 Paddle Switches ..... 74  
MML24 Rocker Switches ..... 74

**Power Duty Switches**  
MML31 Pushbutton Switches ..... 76

**Indicators**  
MML41 Indicators/LED or Incandescent Display ..... 78  
MML46 Indicators/LED or Incandescent Display ..... 78  
MML44 Indicators/LED Display ..... 80

**Lenses and Buttons**  
MML51 Lenses/Incandescent or Non-lighted Display ..... 82  
MML52 Lenses/LED or Neon Display ..... 82

**Mounting Hardware**  
MML61 Strip Mounting Frames ..... 85  
MML72/73 Bezels and Mounting Clips ..... 86  
MML74 PWB Mount Support Brackets ..... 86

**LED's, Lamps, Receptacles**  
MML92/93 LED's/Receptacles ..... 87/90  
MML91/93 Incandescent Lamps/Receptacles ..... 89/90



**MML medical application.** Intranavenous fluid flow controller automatically dispenses fluids for medications, therapy, and nutrition.



**MML communications application.** Mobile radio control keeps businesses in touch with employees on the road.

# Manual Switches

## Miniature Manual Line

MML Series

### MML CHARACTERISTICS

	MML 10 Series	MML 20 Series	MML 30 Series	MML 40 Series
<b>Mechanical Lifetime*</b>				N/A
Pushbuttons—Momentary	1,000,000	250,000	100,000	---
Pushbuttons—Alternate	100,000	100,000	100,000	---
Rockers	100,000	250,000	100,000	---
Paddles	100,000	250,000	100,000	---
<b>Electrical Lifetime***</b>				N/A
Pushbuttons—Momentary	1,000,000	25,000	25,000	---
Pushbuttons—Alternate	100,000	25,000	25,000	---
Rockers	100,000	25,000	25,000	---
Paddles	100,000	25,000	25,000	---
<b>Agency Ratings</b>				
UL	File E53576	File E12252	File E12252	File E58932
CSA	File L R4442	File LR4442	File LR4442	File LR4442

\* 95% Survival  
 \*\* Lifetime at Full Rated Load

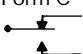
### MML ELECTRICAL DATA

#### MML10 SERIES

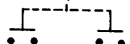
<b>Electrical Characteristics</b>	Integrated Circuit Function	5-24 VDC Sinking	
	Supply Current (Max.)	7 mA (Released) 8 mA (Operated no load)	
	Output Voltage (Operated)	0.3 Volt (Sinking 10 mA)	
	Output Leakage Current Max. (Released)	5.0 $\mu$ A	
	Switching Time Max.		
	Rise 10% to 90%	1.5 $\mu$ sec (Sinking 10 mA)	
	Fall 90% to 10%	0.5 $\mu$ sec (Sinking 10 mA)	
	Rated Output Current	10 mA Sinking	
	<b>Absolute Maximum Ratings</b>	Supply Voltage ( $V_s$ )	-28 to +28 VDC
		Voltage Externally Applied to Output	-0.5 Volt min. +28 Volts max. (Off condition)
Loads to Output		20 mA (Sinking)	
Storage Temperature		-40° to +85°C (-40° to +185°F)	
Operating Temperature		-18° to +65°C (0° to +149°F) and supply voltage of 4.5 to 5.5 VDC	

As with all solid state components, performance can be expected to deteriorate as rating limits are approached; however, they will not be damaged unless the limits are exceeded.

#### MML20 SERIES

<b>Electrical Rating</b> (silver contacts)	<b>Standard buttons</b>
	Up to 1 amp, 125 VAC
<b>Electrical Rating</b> <b>Gold Contacts</b>	<b>1 piece plunger/lens cap buttons:</b>
	Black—Up to 1 amp, 125 VAC
	All others—Up to 0.5 amp, 125 VAC
<b>Electrical Rating</b> <b>Gold Contacts</b>	<b>All button styles:</b>
	Up to 0.25 amp, 30 VDC UL rating—0.10 amp, 30 VDC
	One pole Form C
	

#### MML30 SERIES

<b>MML31:</b>	
<b>Electrical Rating</b>	6A @ 125 VAC, 250 VAC; 2A @ 30 VDC;
<b>Silver Contacts</b>	1A @ 125 VDC "L"; 1/10 hp @ 125 VAC
<b>Contact Arrangement</b>	1 or 2 poles Form X
	

# Manual Switches

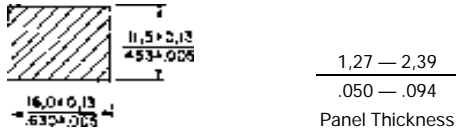
## Miniature Manual Line

MML Series

MOUNTING DIMENSIONS (For reference only)

### PANEL CUTOUTS FOR PUSHBUTTON SWITCHES AND INDICATORS/RECTANGULAR TYPE

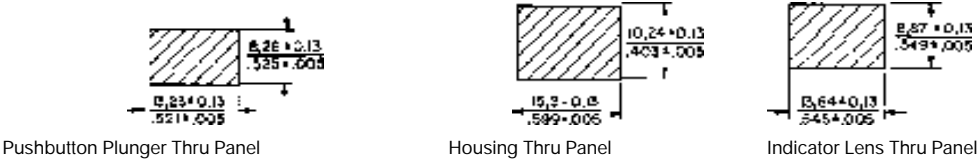
#### INDIVIDUAL SNAP-IN PANEL MOUNT



#### PANEL PUNCH FOR MML SERIES

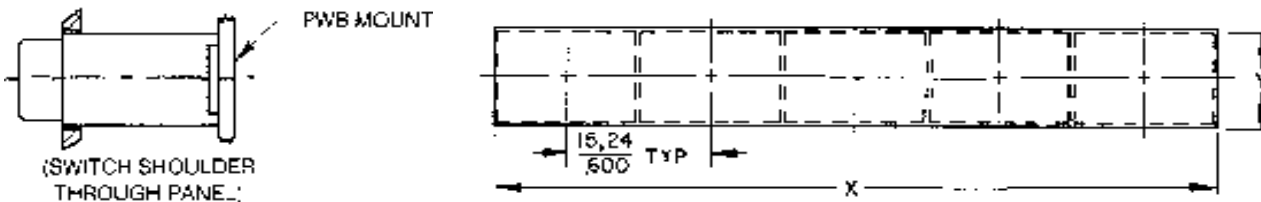
A panel punch is manufactured by Greenlee-Textron Tool Co., Rockford, IL (815-926-3011).

#### INDIVIDUAL PRINTED WIRING BOARD (PWB) MOUNT



#### MULTI-UNIT PRINTED WIRING BOARD (PWB) MOUNT

##### Horizontal Mount



Establish tooling holes on X coordinate and use these holes to establish relationship between PWB and Panel

$$\text{Terminals } \frac{0.20}{.008} \times \frac{0.76}{.030}$$

Recommended hole size in PWB  $\frac{1.17}{.046}$

$$N = \text{Number of switches}$$

$$X = N-1 \times \frac{15.24}{.600} + \frac{15.11}{.595}$$

$$Y = \frac{10.16}{.400}$$

Example: N = 5 Switches

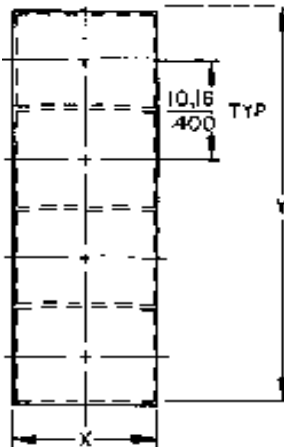
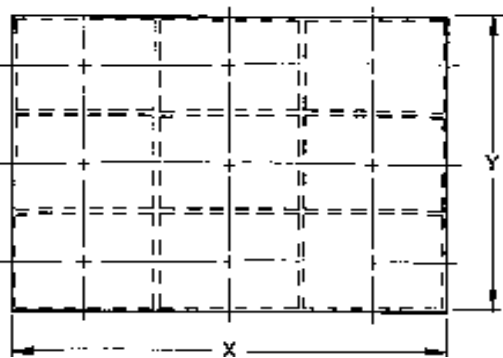
$$X = 5-1 \times \frac{15.24}{.600} + \frac{15.11}{.595}$$

$$X = \frac{76.07}{2.995}$$

Switches must be fixtured to insure proper panel cutout alignment

##### Matrix Mount

##### Vertical Mount



$$N = \text{Number of Switches}$$

$$N_x = \text{Number of Rows}$$

$$N_y = \text{Number of Columns}$$

$$N = N_x - 1 \times \frac{15.24}{.600} + \frac{15.11}{.595}$$

$$Y = N_y \times \frac{10.16}{.400}$$

$$N = \text{Number of Switches}$$

$$Y = N \times \frac{10.16}{.400}$$

$$X = \frac{15.11}{.595}$$

Example: N = 4

$$Y = 4 \times \frac{10.16}{.400}$$

$$Y = \frac{40.64}{1.600}$$

# Manual Switches

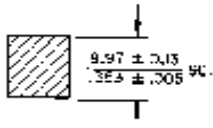
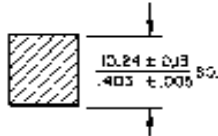
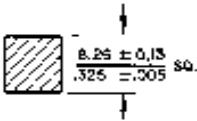
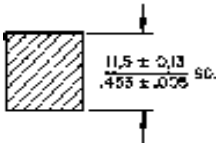
## Miniature Manual Line

MOUNTING DIMENSIONS (For reference only)

### PANEL CUTOUTS FOR PUSHBUTTON SWITCHES AND INDICATORS/SQUARE TYPE

Individual Snap-in Panel Mount

Individual Printed Wiring Board PWB Mount



Pushbutton Plunger Thru Panel

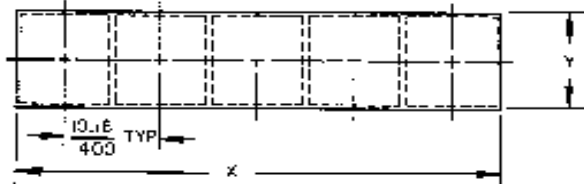
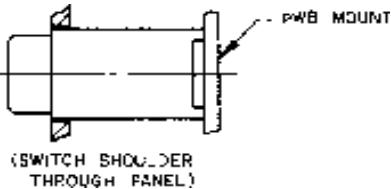
Housing Thru Panel

Indicator Lens Thru Panel

See page 91 for panel punch manufacturer.

### MULTI-UNIT PRINTED WIRING BOARD (PWB) MOUNT

#### Horizontal Mounting



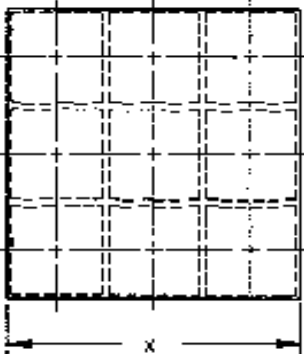
Establish tooling holes on X coordinate and use these holes to establish relationship between PWB and Panel

$$\text{Terminals } \frac{0.20}{.008} \times \frac{0.76}{.030}$$

Recommended hole size in PWB  $\frac{1.17}{.046}$

Switches must be fixtured to insure proper panel cutout alignment

#### Matrix Mounting

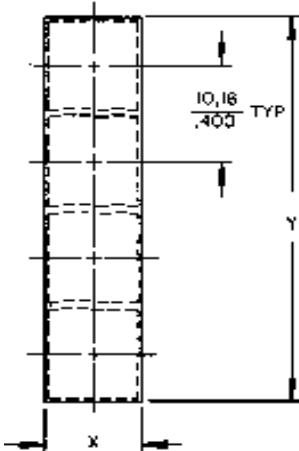


N = Number of Switches  
 $N_x$  = Number of Rows  
 $N_y$  = Number of Columns

$$\text{Formula: } X = N_x \times \frac{10.16}{.400}$$

$$Y = N_y \times \frac{10.16}{.400}$$

#### Vertical Mounting



Example: N = 5 Switches

$$X = 5 \times \frac{10.16}{.400}$$

$$X = \frac{50.80}{2.00}$$

N = Number of Switches

$$\text{Formula: } Y = N_y \times \frac{10.16}{.400}$$

$$X = \frac{10.16}{.400}$$

Example: N = 4

$$Y = 4 \times \frac{10.16}{.400}$$

$$Y = \frac{40.64}{1.600}$$

# Manual Switches

## Miniature Manual Line

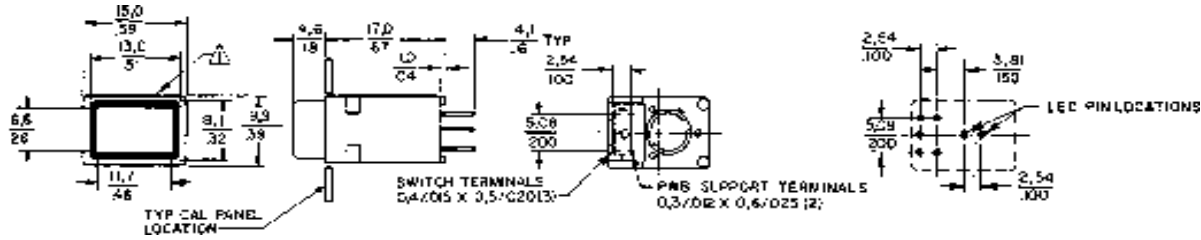
# MML Series

MOUNTING DIMENSIONS (For reference only)

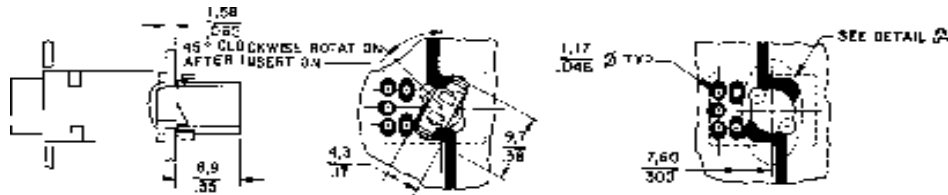
### PRINTED WIRING BOARD MOUNT PUSHBUTTON SWITCHES/RECTANGULAR TYPE

#### MML11 Switches

#### PWB Pin Locations

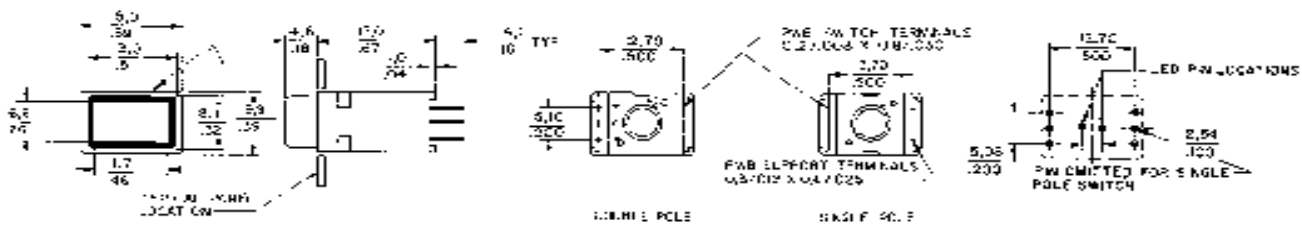


#### PWB Receptacle Installed (LED or Incandescent Lamp)

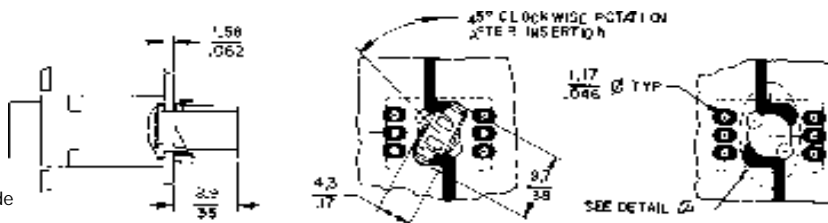


#### MML21 Switches

#### PWB Pin Locations

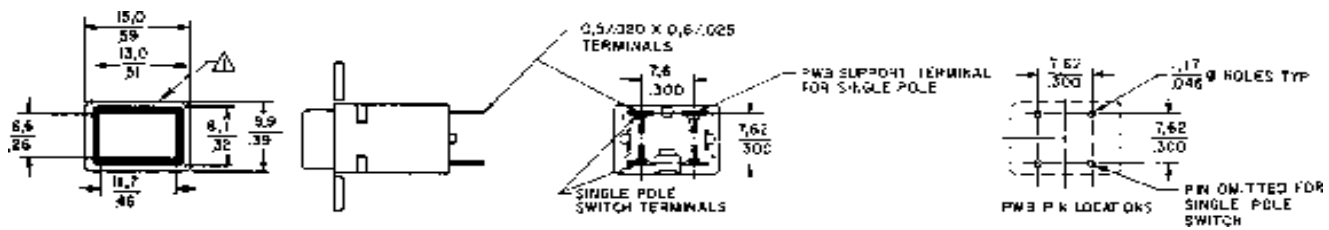


#### PWB Receptacle Installed (LED or Incandescent Lamp)



Notes:  
 △ Micro Switch Identification This Side  
 2 - Linear measure mm/IN. or mm/IN.

#### MML31 Switches



Manuals

# Manual Switches

## Miniature Manual Line

MML Series

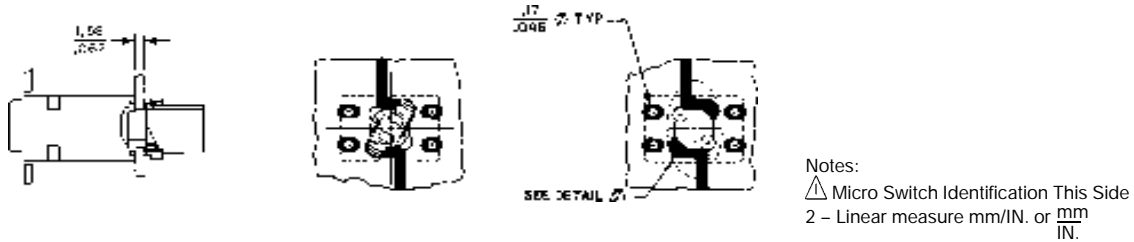
MOUNTING DIMENSIONS (For reference only)

PRINTED WIRING BOARD MOUNT INDICATORS/RECTANGULAR TYPE

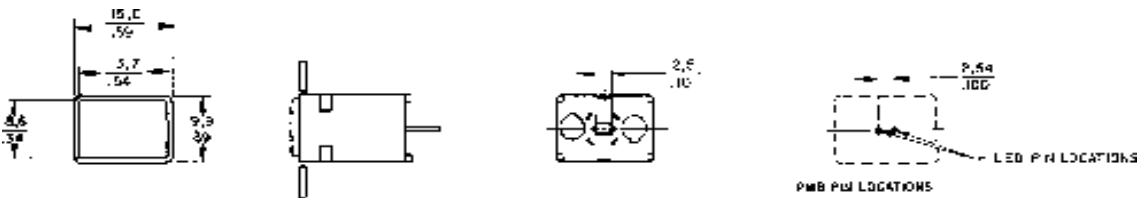
MML41 Indicators



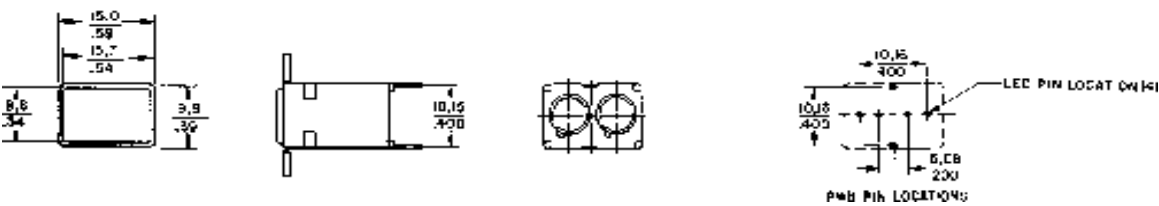
PWB Receptacle Installed (LED or Incandescent Lamp)



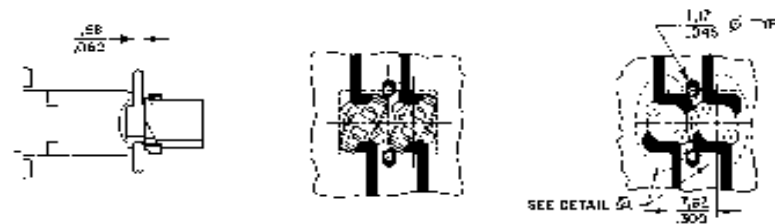
MML44 Indicators



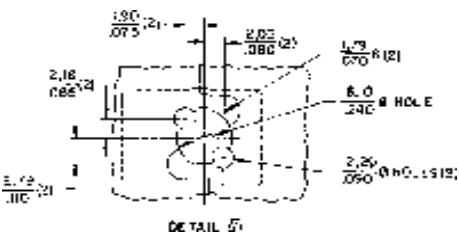
MML46 Indicators



PWB Receptacle Installed (LED or Incandescent Lamp)



PWB Pad Location For Receptacle (LED or Incandescent Lamp)



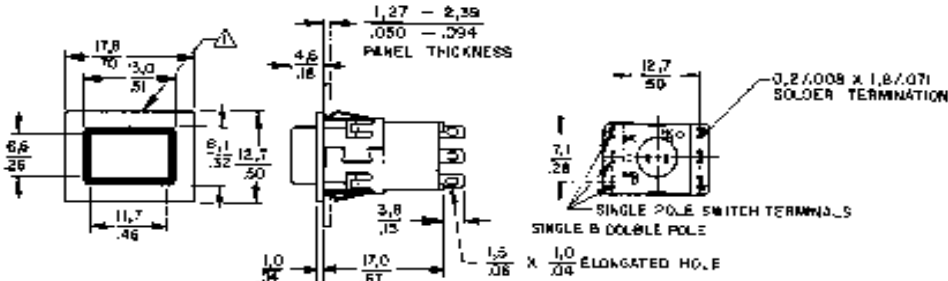
# Manual Switches

## Miniature Manual Line

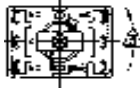
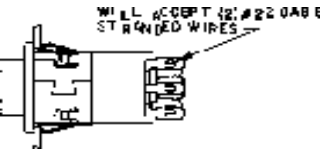
MOUNTING DIMENSIONS (For reference only)

PANEL MOUNT PUSHBUTTON SWITCHES/RECTANUGLAR TYPE

MML21 Switches

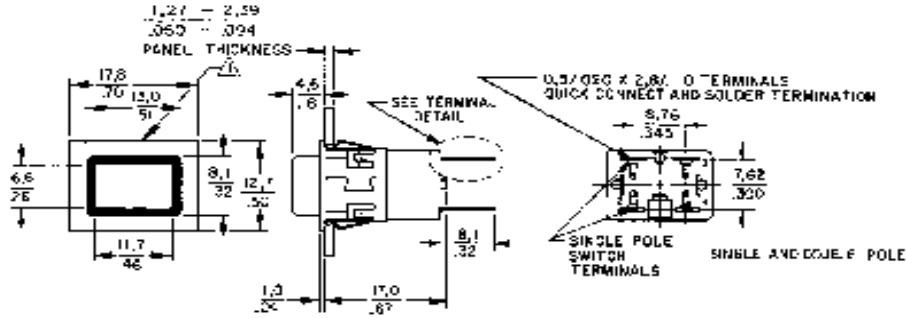


Solder Receptacle Installed (LED or Incandescent Lamp)

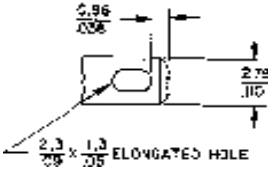


Notes:  
 △ Micro Switch Identification This Side  
 2 - Linear measure mm/IN. or  $\frac{mm}{IN}$   
 △ Rotate 45° counter clockwise for removal from switch or indicator

MML31 Switches



Terminal Detail



Manuals



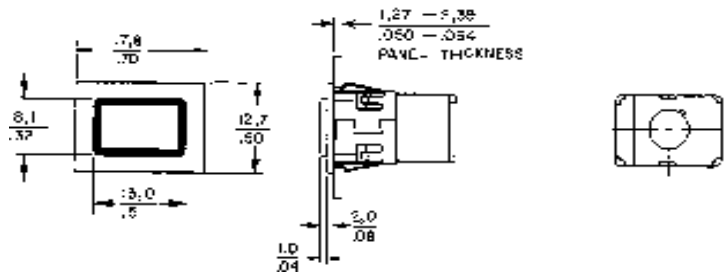
# Manual Switches

## Miniature Manual Line

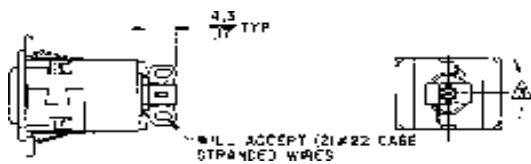
MOUNTING DIMENSIONS (For reference only)

### PANEL MOUNT INDICATORS/RECTANGULAR TYPE

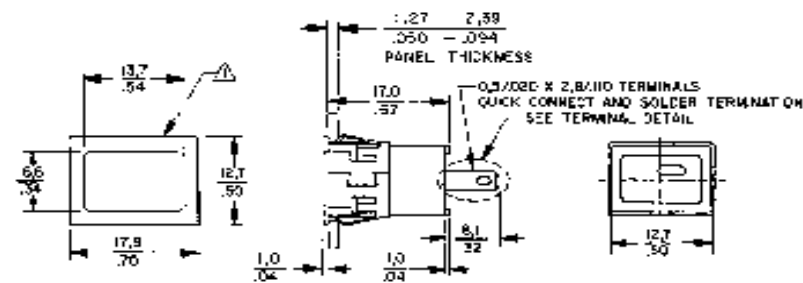
#### MML41 Indicators



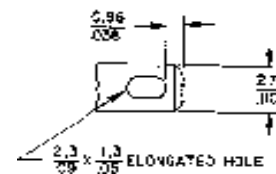
Solder Receptacle Installed (LED or Incandescent Lamp)



#### MML43 Indicators

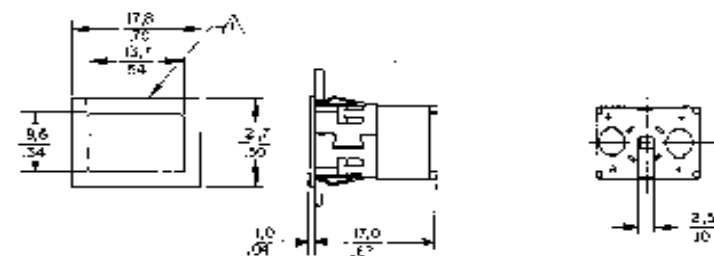


#### Terminal Detail

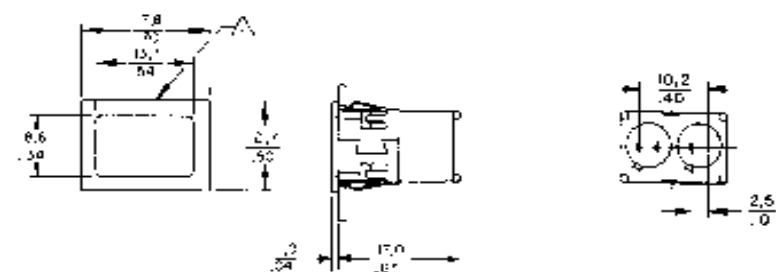


Notes:  
 △ Micro Switch Identification This Side  
 2 - Linear measure mm/IN. or  $\frac{\text{mm}}{\text{IN.}}$

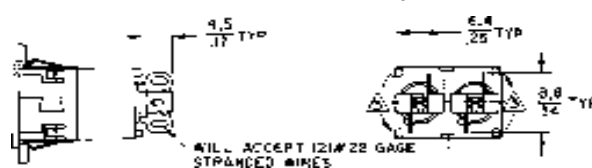
#### MML44 Indicators



#### MML46 Indicators



Solder Receptacle Installed (LED or Incandescent Lamp)



# Manual Switches

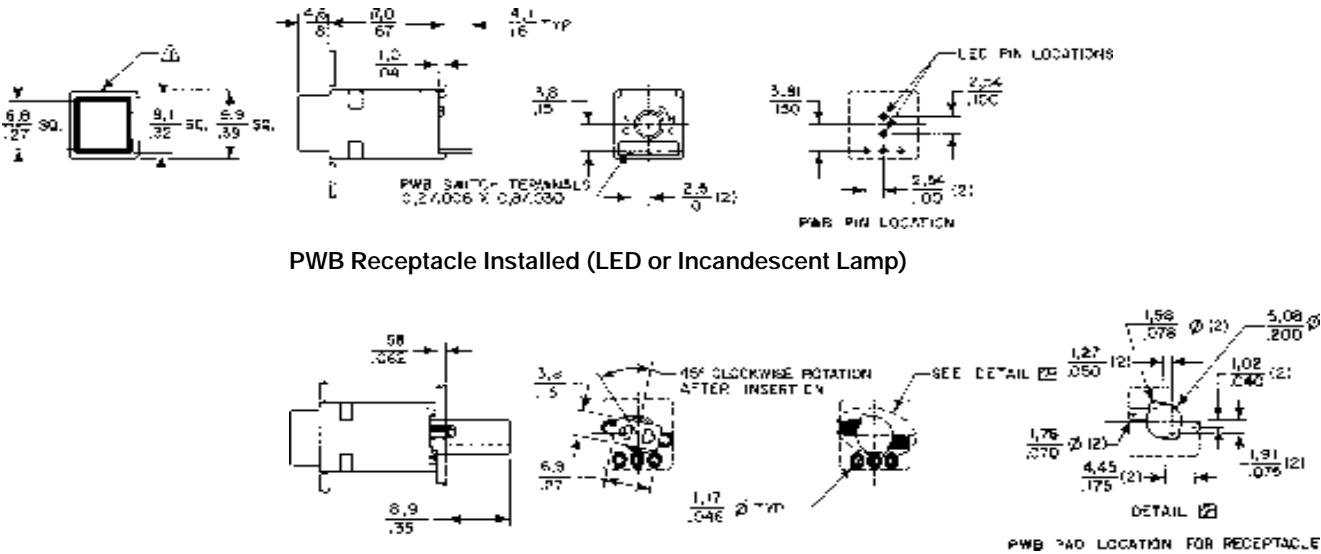
## Miniature Manual Line

MML Series

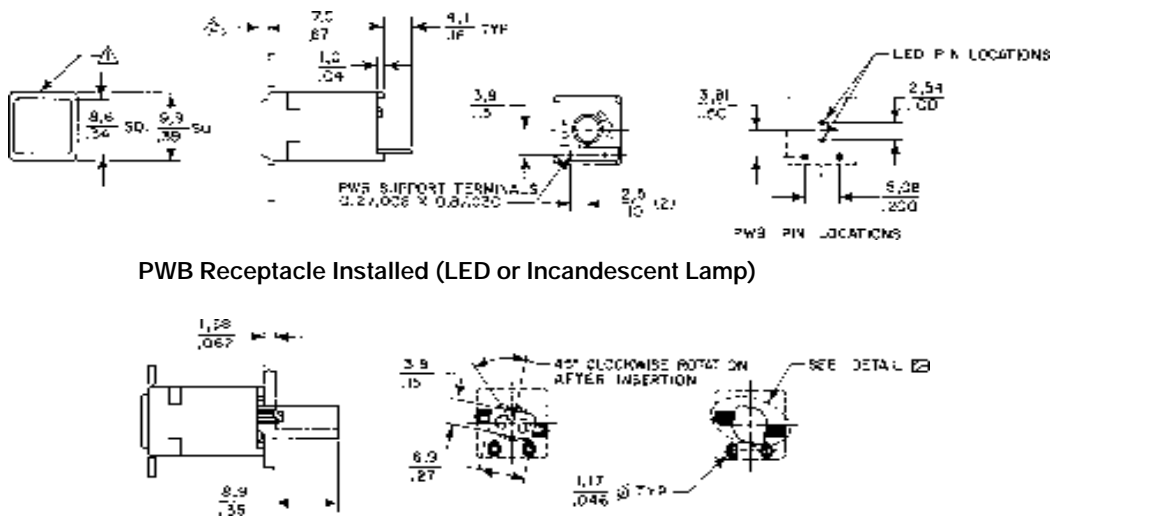
MOUNTING DIMENSIONS (For reference only)

PRINTED WIRING BOARD MOUNT PUSHBUTTON SWITCHES AND INDICATORS/SQUARE TYPE

MML21 Switches



MML46 Indicators



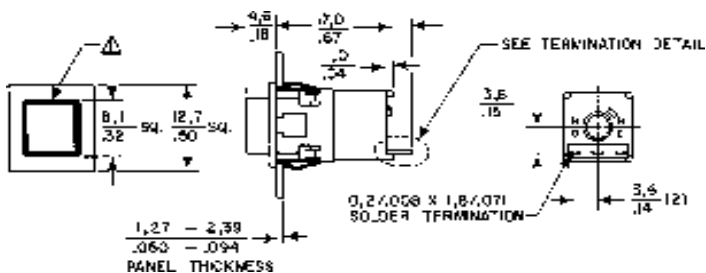
NOTES

- △ MICRO SWITCH IDENTIFICATION THIS SIDE
- △ MML41: 2.0/.08
- MML46: 1.0/.04
- 3-LINEAR MEASURE mm/IN OR mm/IN

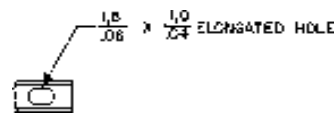
Manuals

PANEL MOUNT PUSHBUTTON SWITCHES/SQUARE TYPE

MML21 Switches



Termination Detail



NOTE:  
To install LED or lamp, use MML93L receptacle shown on page 90.

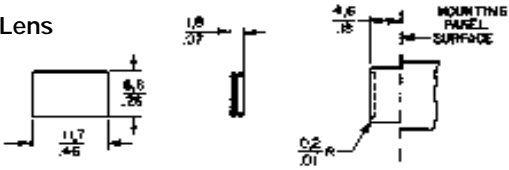
# Manual Switches

## Miniature Manual Line

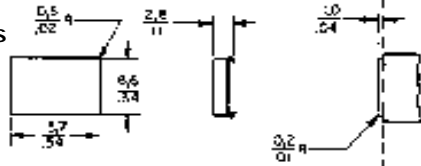
MOUNTING DIMENSIONS (For reference only)

### LENSES

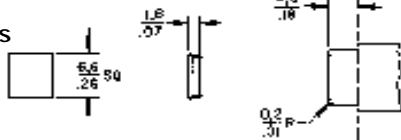
#### Rectangular Pushbutton Lens



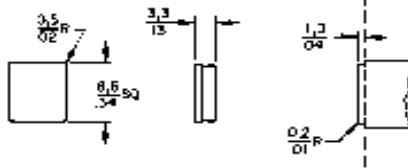
#### Rectangular Indicator Lens



#### Square Pushbutton Lens

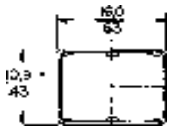


#### Square Indicator Lens

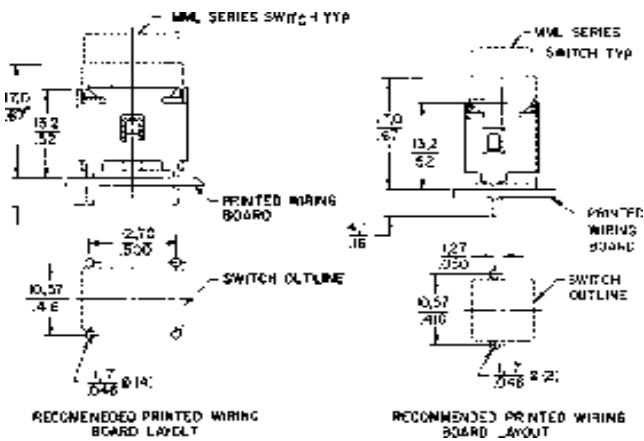


### PWB SUPPORT BRACKETS

#### Rectangular



#### Square



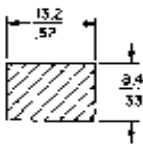
# Manual Switches

## Miniature Manual Line

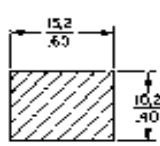
MML Series

MOUNTING DIMENSIONS (For reference only)

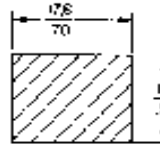
### PANEL CUTOUTS FOR PWB MOUNT PADDLE AND ROCKER SWITCHES



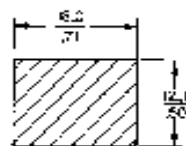
Actuator Thru Panel



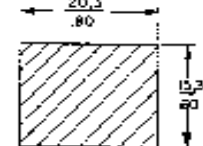
Housing Thru Panel



Umbrella Rocker Thru Panel



2-Pole MML33, 34 Actuator Thru Panel

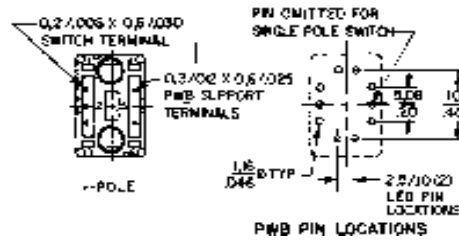
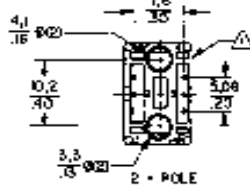
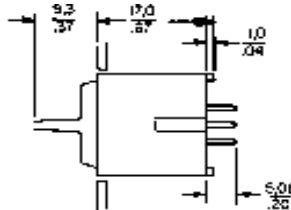
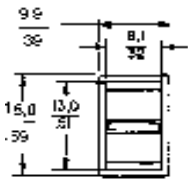


2-Pole MML33, 34 Housing Thru Panel

See page 91 for panel punch manufacturer.

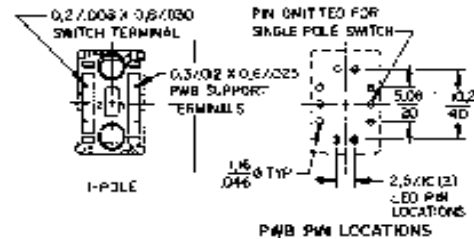
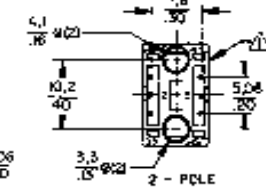
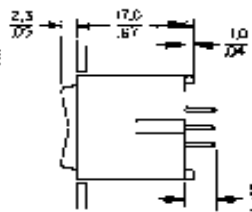
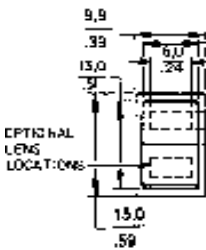
### PRINTED WIRING BOARD MOUNT PADDLE AND ROCKER SWITCHES

#### MML23 Paddle Switches

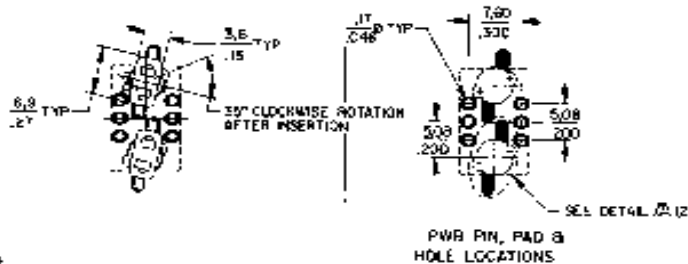
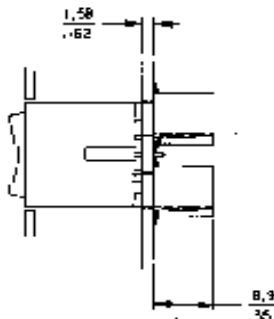


See MML24 drawing below for PWB receptacle dimensions

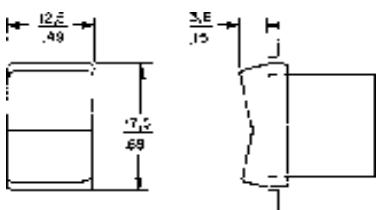
#### MML24 Rocker Switches



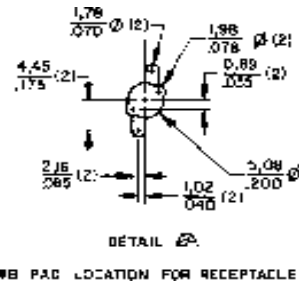
With PWB Receptacle Installed (LED or Incandescent Lamp)



#### MML24 Rocker (Umbrella Type) Switches



Notes:  
 △ Micro Switch Identification This Side  
 2 - Linear measure mm/IN. or mm/IN.



Manuals

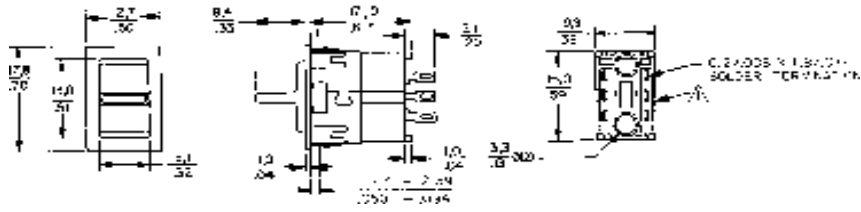
# Manual Switches

## Miniature Manual Line

MOUNTING DIMENSIONS (For reference only)

### PANEL MOUNT PADDLE AND ROCKER SWITCHES

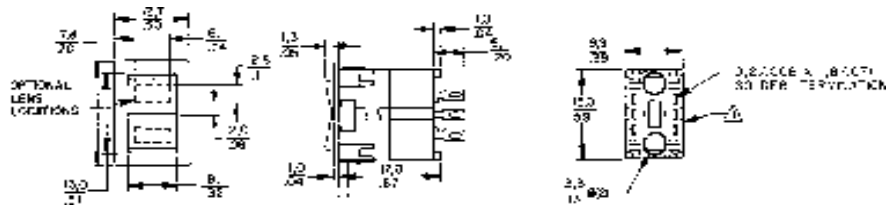
#### MML23 Paddle Switches



Notes:

△ Micro Switch Identification This Side  
 2 - Linear measure mm/IN. or  $\frac{mm}{IN}$ .

#### MML24 Rocker Switches



NOTE:

To install LED or lamp, use MML93R receptacle shown on page 89.

# Manual Switches

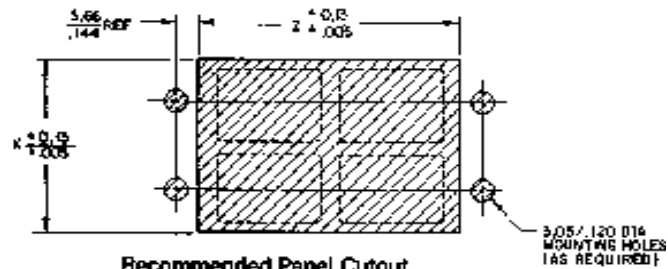
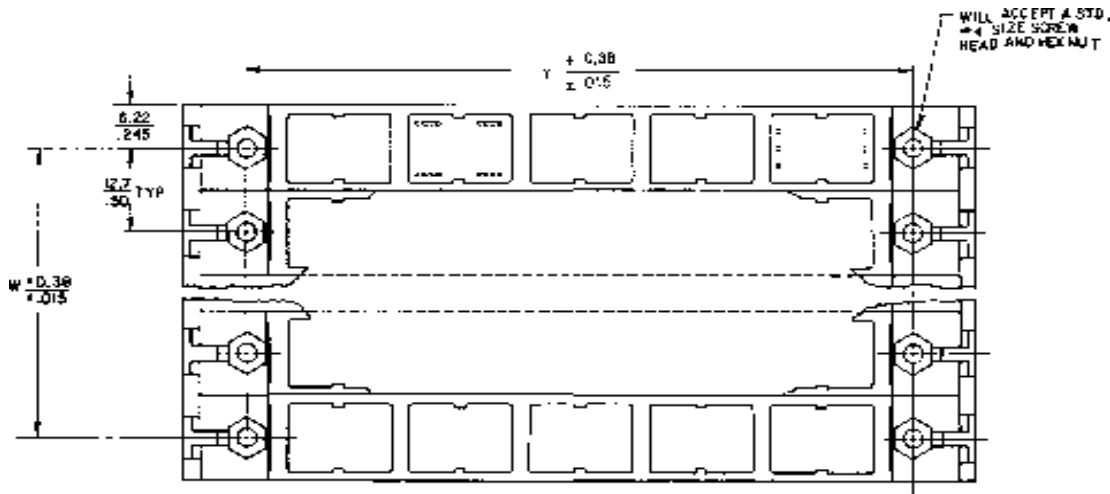
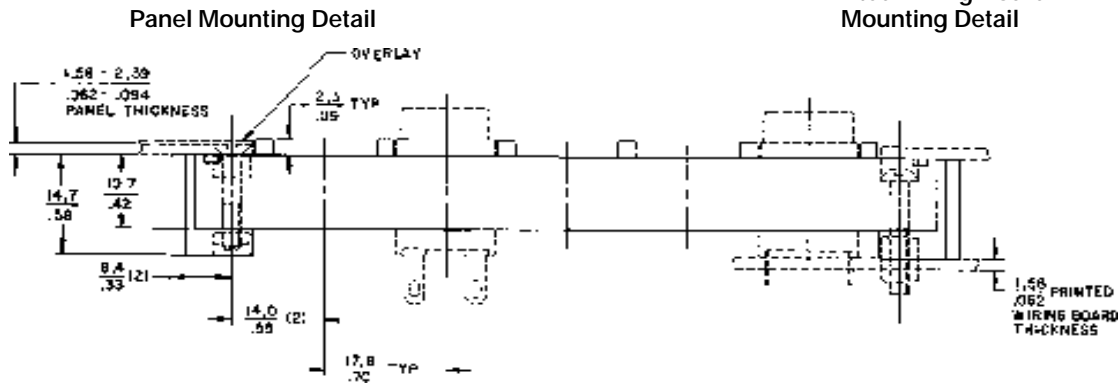
## Miniature Manual Line

MML Series

MOUNTING DIMENSIONS (For reference only)

HORIZONTAL MATRIX MOUNT/RECTANGULAR TYPE

Printed Wiring Board Mounting Detail



Recommended Panel Cutout

10	127,00/5.000	124,56/4.904	10	188,14/7.407	180,64/7.112
9	114,30/4.500	111,86/4.404	9	170,36/6.707	162,86/6.412
8	101,60/4.000	99,16/3.904	8	152,58/6.007	145,08/5.712
7	88,90/3.500	86,46/3.404	7	134,80/5.307	127,30/5.012
6	76,20/3.000	73,76/2.904	6	117,02/4.607	109,52/4.312
5	63,50/2.500	61,06/2.404	5	99,24/3.907	91,74/3.612
4	50,80/2.000	48,36/1.904	4	81,46/3.207	73,96/2.912
3	38,10/1.500	35,66/1.404	3	63,68/2.507	56,18/2.212
2	25,40/1.000	22,96/ .904	2	45,90/1.807	38.40/1.512
1	12,45/ 0.49	10,26/0.404	N/A	N/A	N/A
NO. OF STRIPS	W	X	NO. OF STATIONS	Y	Z

Notes:  
1 - Linear measure mm/IN. or mm

Manuals

# Manual Switches

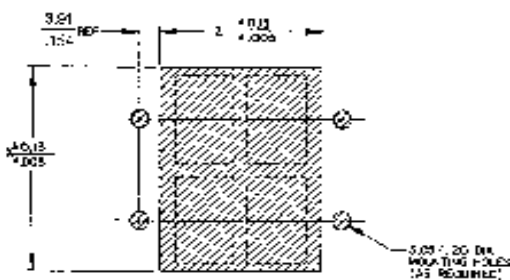
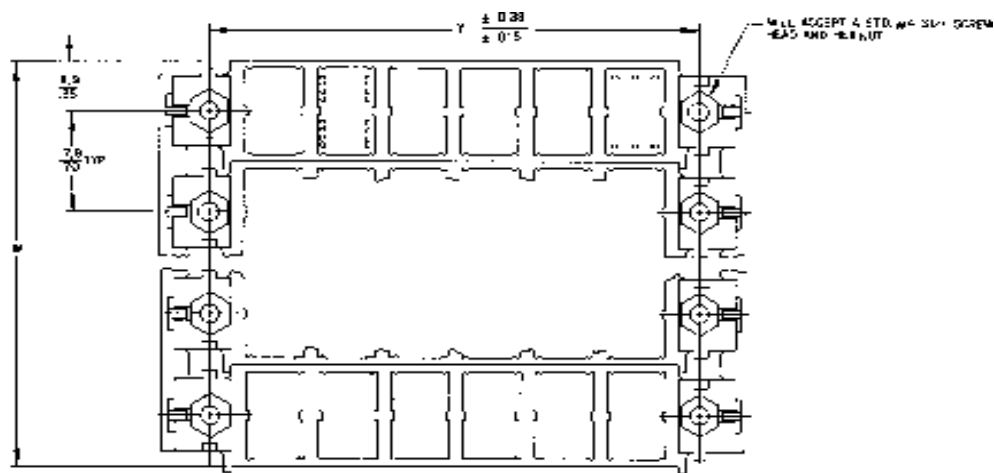
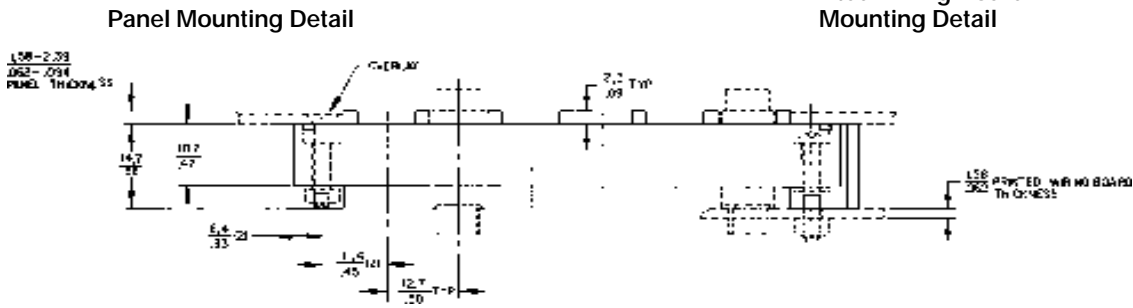
## Miniature Manual Line

MML Series

MOUNTING DIMENSIONS (For reference only)

VERTICAL MATRIX MOUNT/RECTANGULAR TYPE

Printed Wiring Board  
Mounting Detail



Recommended Panel Cutout

RECOMMENDED DIMENSIONS					
10	177,80/7.000	175,26/6.900	10	137,34/5.407	129,69/5.106
9	160,02/6.300	157,48/6.200	9	124,64/4.907	116,99/4.606
8	142,24/5.600	139,70/5.500	8	111,94/4.407	104,29/4.106
7	124,46/4.900	121,92/4.800	7	99,24/3.907	91,59/3.606
6	106,68/4.200	104,14/4.100	6	86,54/3.407	78,80/3.106
5	88,90/3.500	86,36/3.400	5	73,84/2.907	66,19/2.606
4	71,12/2.800	68,58/2.700	4	61,14/2.407	53,49/2.106
3	53,34/2.100	50,80/2.000	3	48,44/1.907	40,79/1.606
2	35,56/1.400	33,02/1.300	2	35,74/1.407	28,09/1.106
1	17,78/ .700	15,24/ .600	1	23,04/ .907	15,39/ .606
NO. OF STRIPS	W	X	NO. OF STATIONS	Y	Z

Notes:  
1 - Linear measure mm/IN. or  $\frac{mm}{IN}$ .

# Manual Switches

## Miniature Manual Line

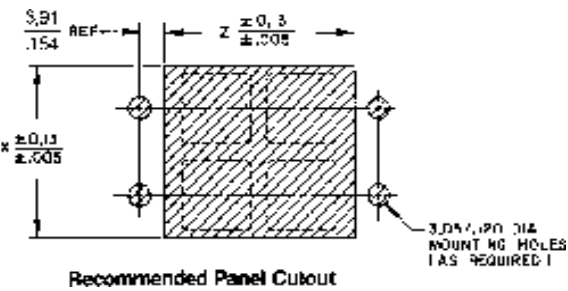
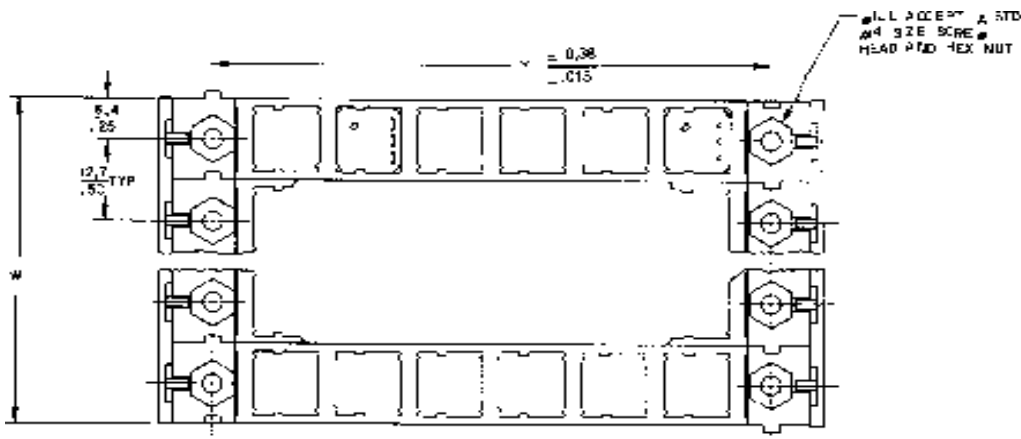
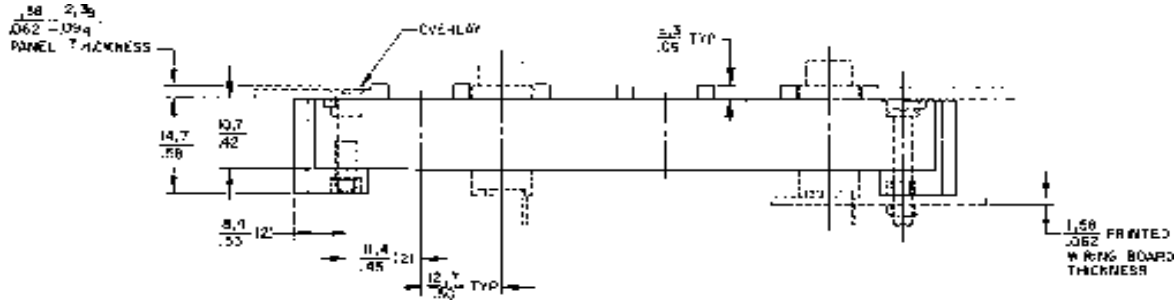
MML Series

MOUNTING DIMENSIONS (For reference only)

MATRIX MOUNT/SQUARE TYPE

Panel Mounting Detail

Printed Wiring Board Mounting Detail



Manuals

RECOMMENDED DIMENSIONS

NO. OF STRIPS	W	X	NO. OF STATIONS	Y	Z
10	127,00/5.000	124,56/4.904	10	137,16/5.400	129,84/5.112
9	114,30/4.500	111,86/4.404	9	124,46/4.900	117,14/4.612
8	101,60/4.000	99,16/3.904	8	111,76/4.400	104,44/4.112
7	88,90/3.500	86,46/3.404	7	99,06/3.900	91,74/3.612
6	76,20/3.000	73,76/2.904	6	86,36/3.400	79,04/3.112
5	63,50/2.500	61,06/2.404	5	73,66/2.900	66,34/2.612
4	50,80/2.000	48,36/1.904	4	60,96/2.400	53,64/2.112
3	38,10/1.500	35,66/1.404	3	48,26/1.900	40,94/1.612
2	25,40/1.000	22,96/ .904	2	35,56/1.400	28,24/1.112
1	12,70/ .500	10,26/ .404	1	22,86/ .900	15,54/ .612

Notes:  
1 - Linear measure mm/IN. or mm/IN.

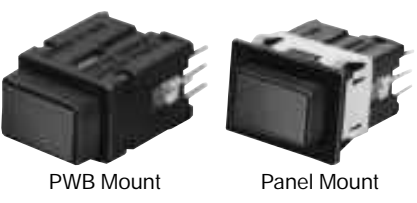


# Manual Switches

## Solid State Pushbutton

MML11 Series

### LED, INCANDESCENT, OR NON-LIGHTED DISPLAY



#### FEATURES

- Hall effect reliability
- Provides low voltage signals that interface with nearly all DC logic
- Accepts one LED or incandescent lamp
- Printed wiring board or snap-in panel mounting
- UL recognized, CSA certified
- Bezels and mounting clips, LEDs and legended lenses can be furnished installed or ordered separately

#### Example: MML11KA3AAK

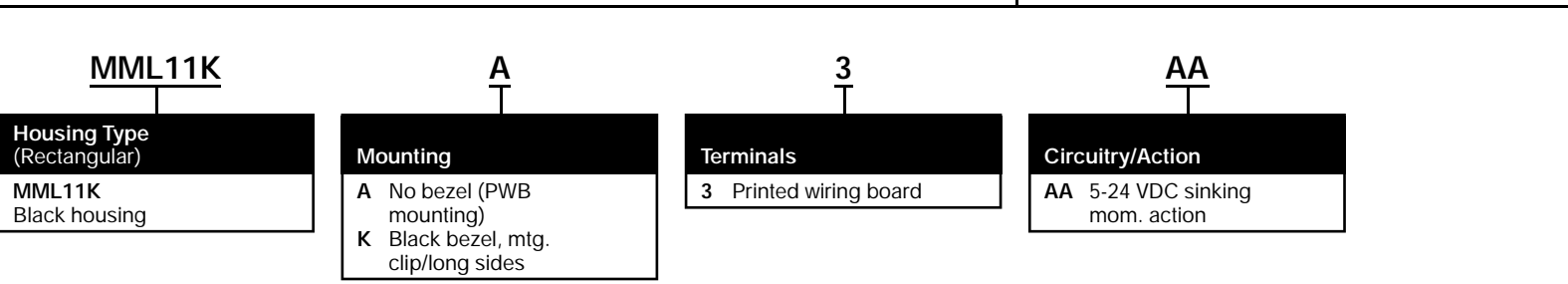
Solid state pushbutton housing (black), no bezel; PWB terminals; momentary action; 5 VDC, current sinking output, black plunger.

#### Example: MML11KK3AAKRSDR

As above, except furnished with black bezel; mounting clips (long sides); red LED, and red lens installed.

### MML11 ORDER GUIDE

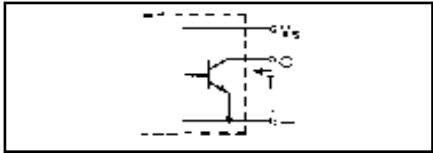
Catalog listing codes for switch, less assembled display options



Electrical Data	Page 69
Strip and matrix mounting	Page 85
Mounting dimensions	Page 93
PWB pin locations	Page 93
LED/receptacle	Page 87/88
Lamp/LED	Page 89/90

**Current Sinking Output**

A permanent magnet plunger moves adjacent to the Hall effect integrated circuit to give a digital, current sinking (normally high and normally low) output.



Order display options assembled to switch by adding codes below

**K**

Plunger	
K	Black

**RS**

LED (Stanley Type)	
XX	No LED
RS	Red*
YS	Yellow*
GS	Green*

\* Permanently installed.

**DR**

Lens	
For LED display:	
DR	Red
DY	Yellow
DG	Green
For incandescent or non-lighted display:	
LR	Red
LY	Yellow
LG	Green
LW	White
LK	Black

Leave this space blank, if legend not desired

Legend	
20	With Legend
Use Legend Order Sheet FO-74024 to cover each catalog listing (see page 83).	

Manuals

**CUSTOMER INSTALLATION:**

**LED**

1. Order LED and receptacle, page 87.
2. Installation instructions, page 88.

**Incandescent Lamp**

1. Order lamp/PWB receptacle or lamp/solder receptacle, page 89.
2. Installation instructions, page 90.

# Manual Switches

MML21 Series

## Electronic Control Pushbutton

### LED, INCANDESCENT, OR NON-LIGHTED DISPLAY



PWB Mount  
(Standard plunger)



Panel Mount  
(Standard plunger)



PWB Mount  
(One-piece plunger)

#### FEATURES

- Silver or gold contacts
- Choice of rectangular or square housings
- Accepts one LED or incandescent lamp
- Printed wiring board or snap-in panel mounting
- Bezels and mounting clips, LEDs and legended lenses can be furnished installed or ordered separately
- UL recognized, CSA certified

#### Example: MML21KK3AAK

Electronic control pushbutton switch with standard plunger; rectangular housing (black); bezel (black); mounting clips on long sides, PWB terminals; 1-pole, momentary action, silver contacts, black plunger.

#### Example: MML21KK3AAKRSDR

As above, except furnished with red LED and red lens installed.

MML21KK3AAHRSXX20 as above, legended.

Catalog listing codes for switch, less assembled display options

### MML21 STANDARD PLUNGER SWITCHES ORDER GUIDE

MML21K		K		3		AA	
Housing Type		Mounting		Terminals		Circuitry/Action (Each pole is double throw)	
		Rectangular	Square			Rectangular	Square
MML21K Rectangular Black Housing MML21H Square Black Housing		A No bezel (PWB mounting) K Black bezel, mtg. clip/long sides	A No bezel (PWB mounting) R Black bezel & mtg. clip	3 Printed Wiring Board 2 Solder		<b>Silver Contacts:</b> AA 1 pole, mom. action AB 1 pole, alt. action AC 2 pole, mom. action AD 2 pole, alt. action <b>Gold Contacts:</b> BA 1 pole, mom. action BB 1 pole, alt. action BC 2 pole, mom. action BD 2 pole, alt. action	<b>Silver contacts:</b> AA 1-pole, mom. action AB 1-pole, alt. action  <b>Gold contacts</b> BA 1-pole, mom. action BB 1-pole, alt. action

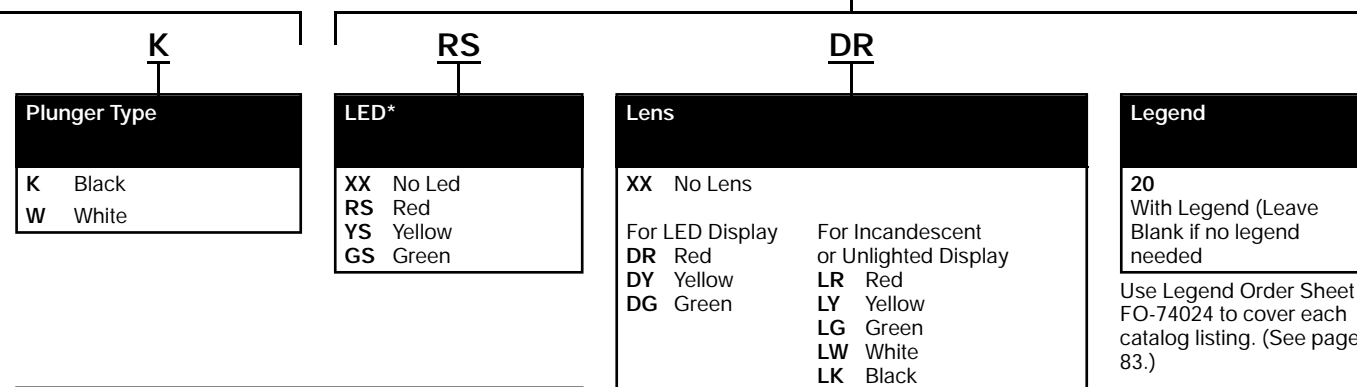
### MML21 ONE PIECE LENS/PLUNGER SWITCHES ORDER GUIDE

Catalog listing codes for switch, less assembled display options

MML21H		K		3		AA	
Housing Type		Mounting		Terminals		Circuitry/Action (Each pole is double throw)	
		Rectangular	Square			Rectangular	Square
MML21K Rectangular Black Housing MML21H Square Black Housing		A No bezel (PWB mounting) K Black bezel, mtg. clip/long sides	A No bezel (PWB Mounting) R Black bezel & mtg. clip	3 Printed Wiring Board 2 Solder		<b>Silver Contacts:</b> AA 1 pole, mom. action AB 1 pole, alt. action AC 2 pole, mom. action AD 2 pole, alt. action <b>Gold Contacts:</b> BA 1 pole, mom. action BB 1 pole, alt. action BC 2 pole, mom. action BD 2 pole, alt. action	<b>Silver contacts:</b> AA 1-pole, mom. action AB 1-pole, alt. action  <b>Gold contacts</b> BA 1-pole, mom. action BB 1-pole, alt. action

Electrical Data	Page 69
Bezels	Page 86
Strip and matrix mounting	Page 85
PWB pin locations	Page 93

Order display options assembled to switch by adding codes below



### CUSTOMER INSTALLATION:

#### LED

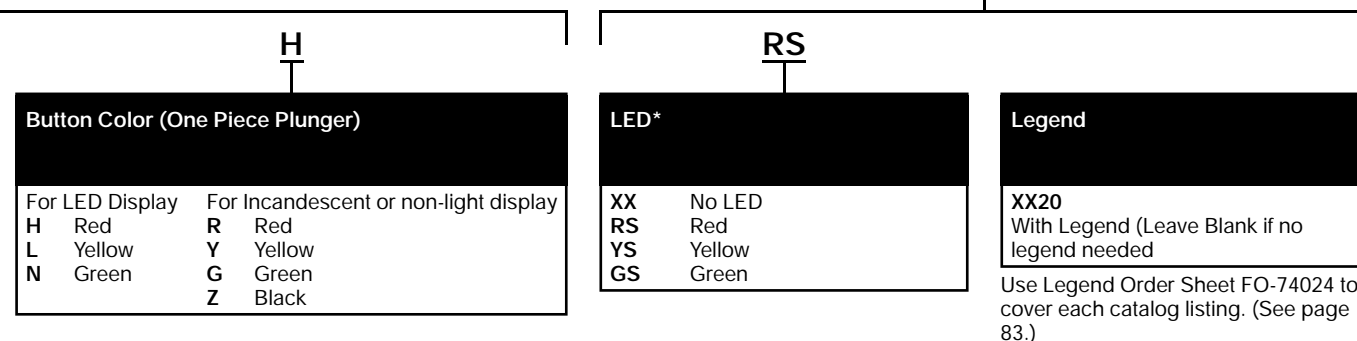
1. Order LED and receptacle, page 87.
2. Installation instructions, page 88.

#### Incandescent Lamp

1. Order lamp/PWB receptacle or lamp/solder receptacle, page 89.
2. Installation instructions, page 90.

Manuals

Order display options assembled to switch by adding codes below



#### \*Notes:

1. When an LED is specified in a **rectangular** MML21 listing, MICRO SWITCH will permanently install it in the housing.
2. MICRO SWITCH does **not** permanently install an LED in a **square** MML21 listing. To install an LED in a square housing, order a MML93L or MML93G receptacle and a MML92 LED (see pages 88 and 90).

# Manual Switches

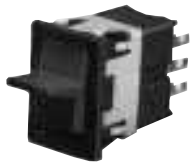
## Electronic Control Paddle

MML23/24 Series

### NON-LIGHTED DISPLAY



PWB Mount



Panel Mount

#### FEATURES

- Printed circuit board or snap-in panel mounting
- Bezels and mounting clips can be furnished installed or ordered separately
- UL recognized, CSA certified

#### Example: MML23KA3AA01K

Electronic control paddle switch with black housing; printed wiring board mounting; printed wiring board terminals; 1 pole, silver contacts; 2-position, maintained action; one circuit ON in each position; black paddle.

### MML23 ORDER GUIDE

#### MML23K

Housing Type
MML23K Black housing

#### A

Mounting
A No bezel (PWB mounting) K Black bezel, mtg. clip/long sides

#### 3

Terminals
3 Printed wiring board 2 Solder

#### AA

Circuitry
Insert code letters from Circuitry Chart

# Electronic Control Rocker Switches MML24

### LED, INCANDESCENT, OR NON-LIGHTED DISPLAY



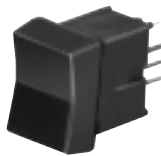
PWB Mount



Panel Mount



PWB Mount  
(Lighted rocker)



PWB Mount  
(Umbrella rocker)

#### FEATURES

- Accepts one or two LEDs or incandescent lamps which are ordered separately
- Printed wiring board mounting or snap-in panel mounting
- Bezels and mounting clips can be furnished installed or ordered separately
- UL recognized, CSA certified

### MML24 ORDER GUIDE (Catalog listing for switch, less assembled display options)

#### MML24K

Housing Type
MML24K Black housing

#### A

Mounting
A No bezel (PWB mounting) K Black bezel, mtg. clip/long sides

#### 3

Terminals
3 Printed wiring board 2 Solder

#### AA

Circuitry
Insert code letters from Circuitry Chart

# Manual Switches

## Electronic Control Paddle

MML23/24 Series

Electrical Data	Page 69
Bezels	Page 86
Strip and matrix mounting	Page 85
Mounting dimensions	Page 99/100
PWB pin locations	Page 99

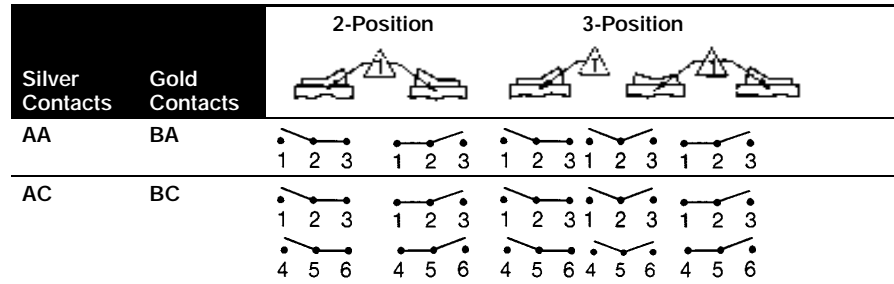
Rockers and paddles are permanently installed.

<b>01</b>	<b>K</b>
<b>Action</b> Insert code numbers from Operating Action Chart	<b>Paddle</b> K Black

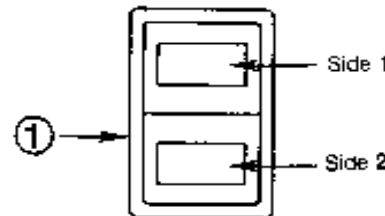
**Example: MML24KA3AA01HDRXX**  
Electronic control rocker switch with black housing, printed wiring board terminals; 1 pole, silver contacts; 2-position, maintained action; one circuit ON in each position; black rocker, red lens for LED display in Side 1 and no lens in Side 2.

**Note:** Umbrella rockers are available with PWB terminals only.

### CIRCUITRY



The "MICRO SWITCH" identification is shown on this side of the switch housings.



### OPERATING ACTION

2-Position	01	Maint.	None	Maint.
	02	Mom.	None	Maint.
	03	Maint.	None	Mom.
3-Position	04	Maint.	Maint.	Maint.
	05	Mom.	Maint.	Mom.
	07	Mom.	Maint.	Maint.

Order display options assembled to switch by adding codes below.

<b>01</b>	<b>H</b>
<b>Action</b> Insert code numbers from Operating Action Chart	<b>Rocker</b> K Black rocker, non-lighted H Black rocker, one lens* F White rocker, one lens* <small>* Lighted switches with solder terminals require MML93R receptacle to install lamps or LEDs. See Page 90.</small>

<b>DRXX</b>		Leave blank, if legend not desired
<b>Lens</b>		<b>Legend</b>
<b>Side 1</b>	<b>Side 2</b>	<b>20</b> With legend
XX None	XX None	Use legend order sheet FO-74193 to cover each catalog listing (see page 84).
LED display: DR Red DY Yellow DG Green	Incand. display: LR Red LY Yellow LG Green LW White	
LED display: DR Red DY Yellow DG Green	Incand. display: LR Red LY Yellow LG Green LW White	

**CUSTOMER INSTALLATION:**

**LED**

- Order LED and receptacle, page 87.
- Installation instructions, page 88.

**Incandescent Lamp**

- Order lamp/PWB receptacle or lamp/solder receptacle, page 89.
- Installation instructions, page 90.

Manuals

# Manual Switches

## Power Duty Pushbutton

MML31 Series

### NON-LIGHTED DISPLAY



PWB Mount



Panel Mount

### FEATURES

- Printed circuit board or snap-in panel mounting
- Bezels and mounting clips, and legended lenses can be furnished installed or ordered separately
- UL recognized, CSA certified.

### Example: MML31KK2AAK

Power duty pushbutton switch housing (black); bezel (black) and mounting clips; solder terminals; 1 pole, momentary action; black plunger.

### Example: MML31KK2AAKLR

As above, except furnished with red lens.

### MML31 ORDER GUIDE

Catalog listing codes for switch, less assembled display options

#### MML31K

Housing Type (Rectangular)
MML31K Black housing, non-lighted

#### K

Mounting
A No bezel (PWB mounting) K Black bezel, mtg. clip/long sides

#### 2

Terminals
3 Printed wiring board 2 Solder/Quick-connect

#### AA

Circuitry/Action (Each pole is single-throw, normally open)
AA 1 pole, mom. action AB 1 pole, alt. action AC 2 poles, mom. action AD 2 poles, alt. action

---

Electrical data	Page 69
Bezels	Page 86
Strip and matrix mounting	Page 85
Mounting dimensions	Page 99/100
PWB pin locations	Page 99

---

Order display options assembled to switch by adding codes below

**K**

**Plunger**

**K** Black

**LR**

**Lens**

**LR** Red  
**LY** Yellow  
**LG** Green  
**LW** White  
**LK** Black

Leave this space blank,  
if legend not desired

**Legend**

**20** With Legend

Use Legend Order Sheet  
FO-74024 to cover each  
catalog listing (see page  
83).



# Manual Switches

## Indicators/Pushbutton Style

MML41/46 Series

### LED OR INCANDESCENT DISPLAY



PWB Mount



Panel Mount

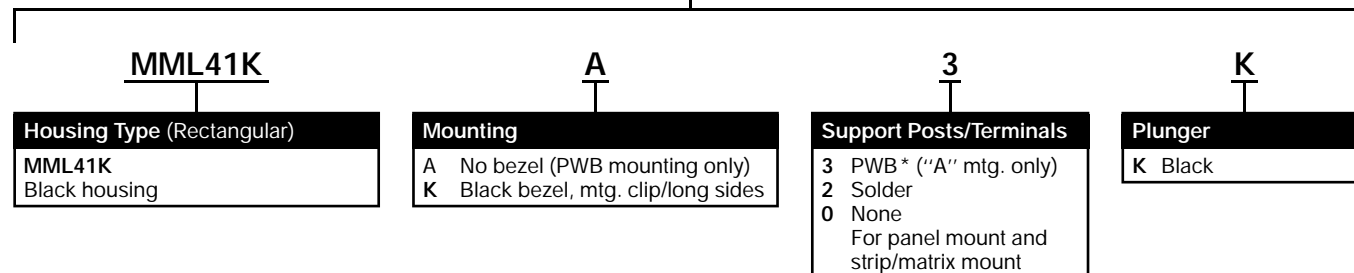
### FEATURES

- Accepts one LED or incandescent lamp

MML41 indicators resemble a pushbutton switch with the button in the "down" position.

### MML41 ORDER GUIDE

Catalog listing codes for indicator, less assembled display options



## Indicators/Flush Mount

MML46

### LED OR INCANDESCENT DISPLAY



PWB Mount



Panel Mount



PWB Mount



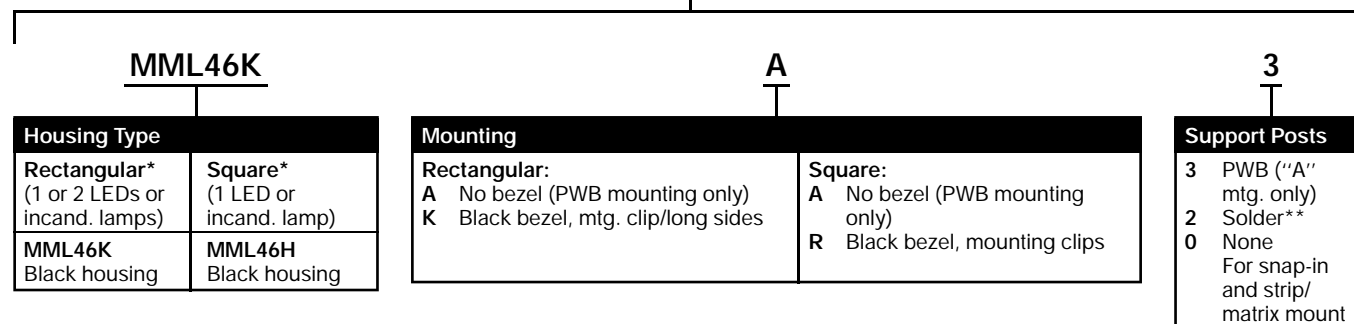
Panel Mount

### FEATURES

- Accepts one or two LEDs or incandescent lamps
- Bezels and mounting clips, LEDs and legended lenses can be furnished installed or ordered separately

### MML46 ORDER GUIDE

Catalog listing codes for indicator, less assembled display options



\*\* Rectangular housings only.

### \* Notes:

1. When an LED is specified in a **rectangular** MML46 listing, MICRO SWITCH will permanently install it in the housing.
2. MICRO SWITCH does **not** permanently install an LED in a **square** MML46 listing. To install an LED in a square housing, order a MML93L or MML93G receptacle and a MML92 LED (see pages 88 and 90).

# Manual Switches Indicators

## MML44 Series

### LED DISPLAY



PWB Mount



Panel Mount

### FEATURES

- Accepts **one LED only**
- Bezels and mounting clips, and legended lenses can be furnished installed or ordered separately

### Example: MML44KAA

Indicator housing (black) which will accommodate one LED, no bezel

### Example: MML44KA3RSDR

As above, except furnished with red LED (PWB terminals) and lens installed.

### MML44 ORDER GUIDE

Catalog listing codes for indicator, less assembled display options

#### MML44K

##### Housing Type (Rectangular)

MML44K  
Black housing

#### A

##### Mounting

A No bezel (PWB mounting)  
K Black bezel, mtg. clip/long sides  
M Black bezel, mtg. clip/short sides

#### 3

##### Terminals

A None  
2 Solder  
3 Printed wiring board\*

\*Use only if assembled LED is specified.

#### RS

##### LED (Stanley type)

XX No  
RS Red  
YS Yellow  
GS Green

---

Bezels	Page 86
LEDs	Page 88
Lenses	Page 82
Strip mounting	Page 85
Mounting dimensions	Page 92/94
PWB pin locations	Page 93/93

---

Order display options assembled to indicator by adding codes below

DR

Leave this space blank if legend not desired

Lens	
DR	Red
DY	Yellow
DG	Green
DC	Clear

Legend	
20	With legend
Use Legend Order Sheet FO-74024 to cover each catalog listing.	

**CUSTOMER INSTALLATION:**

**LED**

1. Order LED and receptacle, page 87.
2. Installation instructions, page 88.

# Manual Switches

MML51 Series

## Button Lenses/Incandescent or Non-lighted Display

### MML51 ORDER GUIDE

For standard plunger MML pushbuttons.

<b>MML51E</b>	<b>20</b>	<b>R</b>
<b>Lens Type</b>	<b>Display/Legend Type</b>	<b>Color</b>
<b>Rectangular Lenses:</b> <b>MML51E</b> Switch lens* <b>MML51G</b> Indicator lens	<b>Transmitted Color:</b> <b>10</b> No legend <b>20</b> With legend	<b>R</b> Red <b>Y</b> Yellow <b>G</b> Green <b>W</b> White <b>K</b> Black (Opaque)

\* Use MML51E with MML41 rectangular pushbutton style indicators.

**Example: MML51E20R**  
 Incandescent or non-lighted display switch lens; red transmitted color, with legend.

**LEGENGING**  
 Use the MML Legend Order Sheets on pages 83 and 84 to specify legending.

## Button Lenses/LED or Neon Display MML52

### MML52 ORDER GUIDE

For standard plunger MML pushbuttons.

<b>MML52G</b>	<b>10</b>	<b>Y</b>
<b>Lens Type</b>	<b>Display/Legend Type</b>	<b>Color/Illumination</b>
<b>Rectangular Lenses:</b> <b>MML52E</b> Switch lens, LED display <b>MML52G*</b> Indicator lens LED display	<b>Transmitted Color:</b> <b>10</b> No legend <b>20</b> With legend	<b>LED Display:</b> <b>R</b> Red <b>Y</b> Yellow <b>G</b> Green <b>C</b> Clear

\* Use MML52E with MML41 rectangular pushbutton style indicators.

**Example: MML52G10Y**  
 LED display indicator lens; yellow transmitted color, no legend.

### HOW TO INSTALL LENSES

Keytabs on two sides of the lenses mate with matching button slots.

**Rectangular** lenses have tabs on the long sides. Seat a long side before snapping in place.

### HOW TO INSTALL LENSES



1. Seat lens.



2. Snap in place.

# Manual Switches

## Strip Mounting Frames

MML61 Series



### MML61 ORDER GUIDE

#### MML61K

5

Orientation/Color
<b>For Rectangular* Housings:</b>
MML61K
Horizontal strip, black
MML61G
Vertical strip, black
<b>For Square Housings</b>
MML61J
Black

No. of Stations
1 One
2 Two
3 Three
4 Four
5 Five
6 Six
7 Seven
8 Eight
9 Nine
10 Ten

Note: Switches and indicators are ordered as separate items.

#### FEATURES

- Provides back of panel or printed wiring board mounting in a multi-unit strip of switches/indicators.
- Devices can be pre-wired prior to installation.
- Holes at each end of frame will accept No. 4 screws.

#### Example: MML61K5

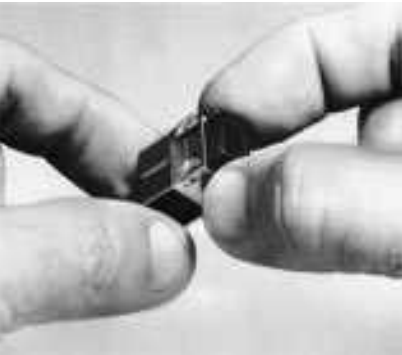
Black 5-station strip mounting frame, horizontal orientation.

Refer to pages 101, 102 and 103 for mounting dimensions.

# Manual Switches

## Bezels/Mounting Clips

# MML72 Series



1. Slip mounting clip over top of switch/indicator housing.



2. Snap bezel onto mounting clip.

Recommended panel thickness for panel mounted units is .050 to .094 in. (1,27 to 2,39 mm).

### MML72 ORDER GUIDE

(Incl. bezel & mounting clips)

#### MML72EE

Type
For Rectangular* Housings: <b>MML72EE*</b> Switch: Mtg. clips on long sides

\* Use this type with MML41 rectangular pushbutton style indicators.

#### K

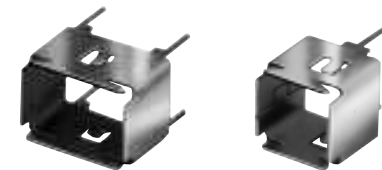
Color
<b>K</b> Black

**Example: MML72EEK**  
Black switch bezel, mounting clips on long sides.

### TO ORDER MOUNTING CLIPS SEPARATELY

For Rectangular Housings: <b>MML73EA</b> (long sides) <b>MML73EB</b> (short sides)
For Square Housings: <b>MML73BA</b>

# PWB Mount Support Bracket MML74 Series



These metal frames with PWB support terminals provide added rigidity for stand-alone PWB mounted switches and indicators. They are not for use with MML57 buttons.

See page 98 for mounting dimensions.

### MML74 ORDER GUIDE

Catalog Listing	For Use With:
MML74E	Rectangular .4" x .6" housings
MML74B	Square housings

# Manual Switches

## Incandescent Lamp Assemblies

MML91/93 Series

### MML91 LAMP/PWB RECEPTACLE ORDER GUIDE

Lamp Type	Use To Illuminate	Voltage	Catalog Listing Incl. Lamp & PWB Receptacle	Industry Lamp No.
T-1 ① (unbased)	Rectangular button lens	5	MML91C	715
		10	MML91BC	7218
		14	MML91CC	8111
		28	MML91DC	6838
T-1 ② (bi-pin)	Square button lens and MML24 rocker lens	5	MML91E	7715
		10	MML91BE	8095
		14	MML91CE	8098
		28	MML91DE	7839

Notes:

① To order PWB receptacle separately, specify **MML93H**.

② To order PWB receptacle separately, specify **MML93G**.

### MML91 LAMP/SOLDER RECEPTACLE ORDER GUIDE

Lamp Type	Use To Illuminate	Voltage	Catalog Listing Incl. Lamp & Solder Receptacle	Industry Lamp No.
T-1 ③ (bi-pin)	Rectangular button lens	5	MML91D	7715
		10	MML91BD	8095
		14	MML91CD	8098
		28	MML91DD	7839

Lamp Type	Use To Illuminate	Voltage	Catalog Listing ④		Industry Lamp No.
			Solder Receptacle	T-1 (Unbased) Lamp Only	
T-1 (unbased)	Square button lens	5	MML93L	MML91A	715
		10	MML93L	MML91BA	7218
		14	MML93L	MML91CA	8111
		28	MML93L	MML91DA	6838
T-1 (unbased)	MML24 rocker lens	5	MML93R	MML91A	715
		10	MML93R	MML91BA	7218
		14	MML93R	MML91CA	8111
		28	MML93R	MML91DA	6838

Notes:

③ To order solder receptacles separately, specify **MML93J**.

④ Order solder receptacles and T-1 lamp listings for complete assembly.

# Manual Switches

# MML93 Series

## LED/Incandescent Lamp Receptacles

**User installed.** Certain MML switches and indicators will accept incandescent lamps, where specified in the order guides.

These lamps are ordered separately and installed by the user, per the procedures described below.

### LAMP INSTALLATION

#### 1. With Printed Wiring Board Receptacle for MML93G and MML93H only.

Use PWB receptacles to permit lamps to be added or replaced from behind the printed wiring board, without soldering.

These receptacles are for use with rectangular pushbuttons, square pushbuttons and MML24 rocker lens only.

Printed wiring boards are not supplied.



1. Insert the PWB receptacle/incandescent lamp assembly through a hole in the printed wiring board.



2. A 1/8-turn applied clockwise to the receptacle locks it in the printed wiring board and establishes the electrical connection.

#### 2. With Solder Terminal Receptacle for MML93J bi-pin only

This receptacle attaches directly to the rear of panel-mounted units. It enables lamps to be added or replaced without rewiring.

This receptacle is for use with all rectangular pushbuttons and MML41 or MML46 rectangular indicators only.



1. Insert solder terminal receptacle into hole in base of panel mount unit.



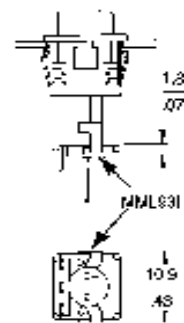
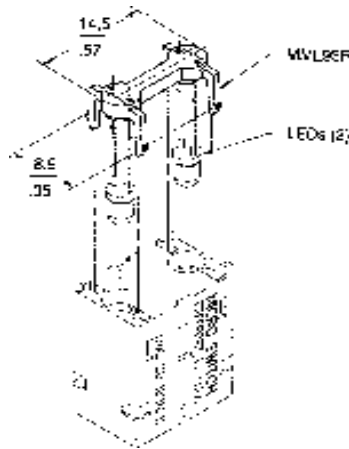
2. A 1/8-turn clockwise applied to the receptacle locks it in the base.

#### 3. With Solder Terminal Receptacles for MML93L/93R Unbased Only or T-1 LED.

Use the receptacles shown at right to install T-1 LEDs or T-1 unbased lamps in panel-mounted MML21 square pushbutton switches and MML24 rocker switches.

#### Procedure:

1. Assemble LEDs or lamps to receptacles (leads first).
2. Snap receptacle into slots in housing base.
3. Solder directly to leads.





# Manual Switches

## LEDs

## MML92 Series

**Factory installed.** Certain MML switches and indicators can be furnished with LEDs **permanently** factory installed, where specified in the order guides.

**User installed.** LEDs can also be ordered separately and installed in these products by the user, per the procedures described below.

### LED INSTALLATION

#### 1. With Printed Wiring Board Receptacle. (MML93K)

PWB receptacle enables T-1  $\frac{3}{4}$  or T-1 LEDs to be added or replaced from behind the printed wiring board, without soldering. LEDs and receptacles are ordered separately. See page 87.

Printed wiring boards are not supplied.



1. Insert the LED/PWB receptacle assembly through a hole in the printed wiring board.



2. A  $\frac{1}{8}$ -turn applied clockwise to the receptacle locks it in the printed wiring board and establishes the electrical connection.

#### 2. With Solder Terminal Receptacle. (MML93J)

This receptacle attaches directly to the rear of panel-mounted units. It enables incandescent lamps to be added or replaced without rewiring. LEDs and receptacles are ordered separately.

This receptacle is for use with all rectangular pushbuttons and MML41 or MML46 rectangular indicators only.



1. Insert solder terminal receptacle into hole in base of panel mount unit.



2. A  $\frac{1}{8}$ -turn clockwise applied to the receptacle locks it in the base.

#### 3. By Soldering To Printed Wiring Board.

In this procedure, the housing is mounted on the printed wiring board after the T-1  $\frac{3}{4}$  LED has been seated.

This procedure can be used with any MML having PWB terminals.



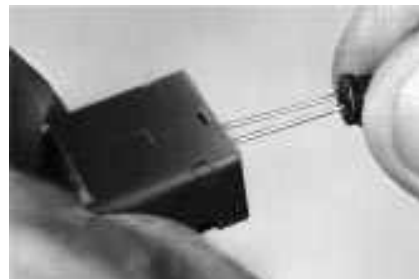
1. Assemble stand-off spacer to LED terminals and seat on printed wiring board.



2. Seat housing on printed wiring board, with LED projecting into hole at the base of the housing.

#### 4. By Soldering to Printed Wiring Board or Leadwire (MML44 indicators only).

T-1  $\frac{3}{4}$  LEDs are added to MML44 indicators via a procedure which is unique to this product. The LED is inserted from the top of the housing with the leadwires protruding through the housing base.



1. Assemble LED to MML44 indicator, with the LED terminals protruding through assembly slot in the middle of housing base.



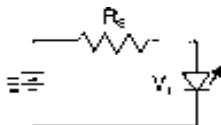
2. Use pencil eraser to snap LED securely in place.

### LED APPLICATION INFORMATION

To insure stable conditions, suitable external control of the LED current must be provided. It is recommended that a minimum of 5 VDC open circuit voltage with an appropriate series resistance be used to drive LED devices. This minimizes current variation and its effect on temperature and forward voltage of the LED.

Resistor values can be determined by supply voltage or current for LED:

$$R_s = \frac{E - V_f}{I_f}$$



WHERE:  $R_s$  = Series Resistance  
 $E$  = Supply Voltage  
 $V_f$  = Forward Voltage of LED  
 $I_f$  = Circuit Current

Maximum drive current is 30 mA. Reverse voltage breakdown of the LED's is 4 volts (min.).

### MML92 ORDER GUIDE

LEDs should be the same color as the lenses they illuminate. They are packed 10 per listing, including stand-off spacers for use when solder terminating to a printed wiring board, per procedure 3 on page 88.

LED Type	Use To Illuminate	Catalog Listing	LED Color	Forward Characteristics Typ. @ 20mA	Max.	LED Manufacturers' Part Numbers
T-1¼	Rectangular button lens	MML92ERS MML92EGS MML92EYS	Red Green Yellow	1.7 V 2.1 V 2.1 V	Stanley: 2.0 V 2.5 V 2.5 V	ESBR5633 ESBG5633 ESAY5633
		MML92ERH MML92EGH MML92EYH	Red Green Yellow	2.2 V 2.3 V 2.2 V	Hewlett Packard: 3.0 V 3.0 V 3.0 V	HLMP-3366 HLMP-3568 HLMP-3466
T-1	Square button lens, MML24 rocker lens rectangular button lens	MML92HRS MML92HGS MML92HYS	Red Green Yellow	1.7 V 2.1 V 2.2 V	Stanley: 2.0 V 2.5 V 2.5 V	ESBR3901 ESPY3901 ESAY3901
		MML92HRH MML92HGH MML92HYH	Red Green Yellow	2.2 V* 2.3 V* 2.2 V	Hewlett Packard: 3.0 V 3.0 V 3.0 V	HLMP-1340 HLMP-1540 HLMP-1440

Long lead: Anode (+). Short lead: Cathode (-).  
 \* @ 25 mA.

Manuals

### MML93 LED PWB RECEPTACLE ORDER GUIDE

LED Type	Use to Illuminate	Catalog Listing
T-1¼	Rectangular button lens or umbrella button lens	MML93K
T-1	Square button lens or MML24 rocker lens	MML93G

### MML93 LED SOLDER TERMINAL ORDER GUIDE

LED Type	Use to Illuminate	Catalog Listing
T-1	Square button	MML93L
T-1	MML24 rocker lens	MML93R
T-1	Rectangular button	MML93J

# Manual Switches

## Incandescent Lamp Assemblies

MML91/93 Series

### MML91 LAMP/PWB RECEPTACLE ORDER GUIDE

Lamp Type	Use To Illuminate	Voltage	Catalog Listing Incl. Lamp & PWB Receptacle	Industry Lamp No.
T-1 ① (unbased)	Rectangular button lens	5	MML91C	715
		10	MML91BC	7218
		14	MML91CC	8111
		28	MML91DC	6838
T-1 ② (bi-pin)	Square button lens and MML24 rocker lens	5	MML91E	7715
		10	MML91BE	8095
		14	MML91CE	8098
		28	MML91DE	7839

Notes:

① To order PWB receptacle separately, specify **MML93H**.

② To order PWB receptacle separately, specify **MML93G**.

### MML91 LAMP/SOLDER RECEPTACLE ORDER GUIDE

Lamp Type	Use To Illuminate	Voltage	Catalog Listing Incl. Lamp & Solder Receptacle	Industry Lamp No.
T-1 ③ (bi-pin)	Rectangular button lens	5	MML91D	7715
		10	MML91BD	8095
		14	MML91CD	8098
		28	MML91DD	7839

Lamp Type	Use To Illuminate	Voltage	Catalog Listing ④		Industry Lamp No.
			Solder Receptacle	T-1 (Unbased) Lamp Only	
T-1 (unbased)	Square button lens	5	MML93L	MML91A	715
		10	MML93L	MML91BA	7218
		14	MML93L	MML91CA	8111
		28	MML93L	MML91DA	6838
T-1 (unbased)	MML24 rocker lens	5	MML93R	MML91A	715
		10	MML93R	MML91BA	7218
		14	MML93R	MML91CA	8111
		28	MML93R	MML91DA	6838

Notes:

③ To order solder receptacles separately, specify **MML93J**.

④ Order solder receptacles and T-1 lamp listings for complete assembly.

# Manual Switches

# MML93 Series

## LED/Incandescent Lamp Receptacles

**User installed.** Certain MML switches and indicators will accept incandescent lamps, where specified in the order guides.

These lamps are ordered separately and installed by the user, per the procedures described below.

### LAMP INSTALLATION

#### 1. With Printed Wiring Board Receptacle for MML93G and MML93H only.

Use PWB receptacles to permit lamps to be added or replaced from behind the printed wiring board, without soldering.

These receptacles are for use with rectangular pushbuttons, square pushbuttons and MML24 rocker lens only.

Printed wiring boards are not supplied.



1. Insert the PWB receptacle/ incandescent lamp assembly through a hole in the printed wiring board.



2. A 1/8-turn applied clockwise to the receptacle locks it in the printed wiring board and establishes the electrical connection.

#### 2. With Solder Terminal Receptacle for MML93J bi-pin only

This receptacle attaches directly to the rear of panel-mounted units. It enables lamps to be added or replaced without rewiring.

This receptacle is for use with all rectangular pushbuttons and MML41 or MML46 rectangular indicators only.



1. Insert solder terminal receptacle into hole in base of panel mount unit.



2. A 1/8-turn clockwise applied to the receptacle locks it in the base.

#### 3. With Solder Terminal Receptacles for MML93L/93R Unbased Only or T-1 LED.

Use the receptacles shown at right to install T-1 LEDs or T-1 unbased lamps in panel-mounted MML21 square pushbutton switches and MML24 rocker switches.

### Procedure:

1. Assemble LEDs or lamps to receptacles (leads first).
2. Snap receptacle into slots in housing base.
3. Solder directly to leads.

