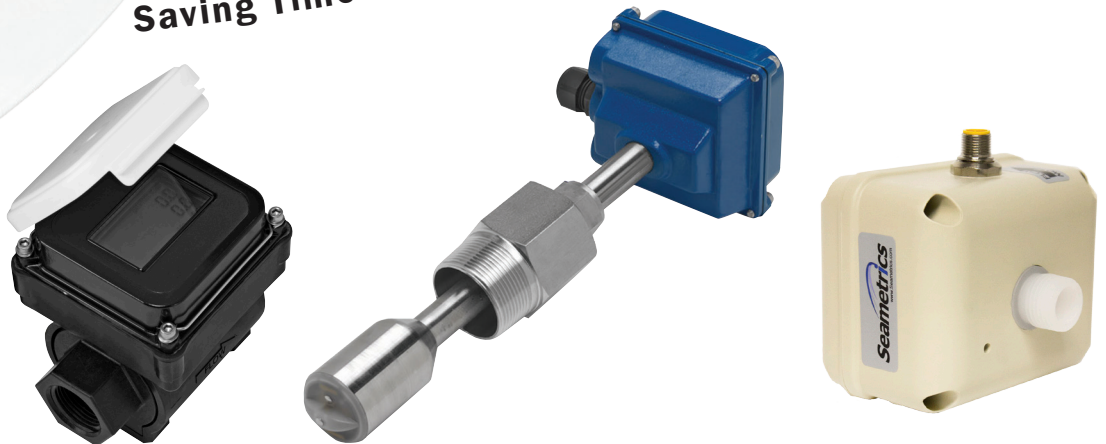


Seametrics

Flow Meters & Controls



Saving Time • Saving Money • Conserving Resources



Controls

FT400-SERIES

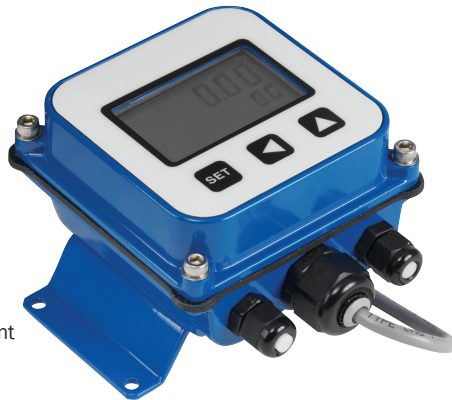
Rate/Total Indicators

FEATURES

- Pulse or 4-20 mA output
- 6 digit rate; 8 digit total
- Flow alarm
- Non-volatile memory

APPLICATIONS

- Water/wastewater treatment
- Water utility
- Industrial fluid control



FT500-SERIES

Batch Controls

FEATURES

- 5 digit rate; 8 digit total
- Flow alarms
- Selectable units
- Multiple outputs

APPLICATIONS

- Chemical batching
- Volume-based regeneration
- Water leakage detection



A055

Signal Converter

FEATURES

- Easy set-up
- Smooth output signal
- 2-16 second input average
- Current loop powered

APPLICATIONS

- SCADA/Telemetry
- Chart recording
- Data logging
- PLC input



PD10 & PS40

Pulse Splitter/Divider

FEATURES

- Divider Range: 1 to 9999
- Splitter Output:
3 Transistor
1 Relay

APPLICATIONS

- Cooling tower/boiler water treatment
- Pace electronic metering pumps
- Industrial water treatment
- Deduct metering



PT35

Dual Timer

FEATURES

- Single or dual timers
- Bright LED display
- Accumulator: 1-9999 pulses
- Timer: 1-9999 seconds

APPLICATIONS

- Water treatment
- Chemical dosing
- Cooling towers
- Boilers



DL76

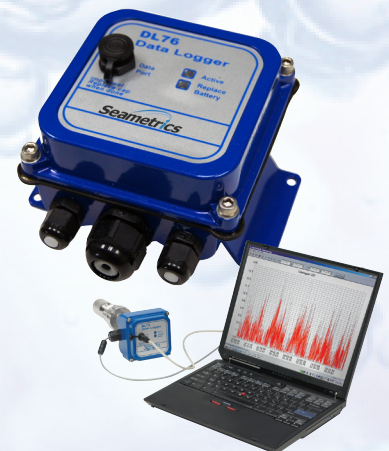
Data Logger

FEATURES

- User-selected sampling interval
- Data storage up to 3 years
- Battery operated
- Units selectable

APPLICATIONS

- Custody transfer regulation
- Peak demand monitoring
- Water usage reporting



PC-SERIES

Power Supplies

Regulated and unregulated, single or dual power supplies with wall, plug-in or din-rail mounting styles.



FITTINGS

Whether your application requires chemical-resistant piping or standard bronze NPT, Seametrics has a fitting for your application. Available designs are T-fittings in PVC, bronze, carbon steel, and stainless steel (304 & 316), or saddles and weld/braze fittings in similar materials. Call your local distributor to determine the right fitting for your Seametrics meter.



Pulse Meters

M-SERIES Pulse Meters



FEATURES

- Multiple pulse rates available
- Pulse rate is field changeable
- 105° cold; 194° hot
- No upstream straight pipe

APPLICATIONS

- Cooling tower chemical control
- Industrial water treatment
- Deduct metering
- Pacing metering pumps



Non-NSF also available

WJ-SERIES

Mechanical Turbine Meters

FEATURES

- 2" to 8" pipe sizes
- Optional pulse rate output
- Accurate and economical
- Pulse rate is field changeable

APPLICATIONS

- Remote totalizing
- Water treatment
- Cooling water monitoring
- Pacing electronic metering pumps



Electronic Meters

S-SERIES

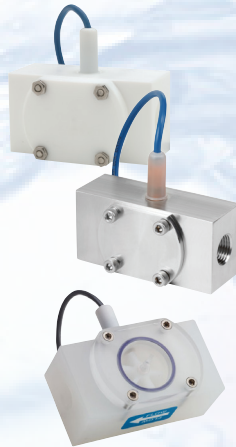
Low-Flow Meters

FEATURES

- Flow rates from .07 to 40 GPM
- Pulse output (optional 4-20 mA)
- Polypro, Teflon, Stainless & Brass
- Jewel bearings

APPLICATIONS

- Low flow monitoring
- Chemical batching
- Proportional chemical injection
- Fertilizer injection



IP800-SERIES

Fixed Depth Insertion

FEATURES

- ½" to 8" pipe sizes
- Low-friction, long-life jewel bearings
- PVC, Polypro, brass, stainless steel

APPLICATIONS

- Industrial water treatment
- Cooling water monitoring
- Chemical proportioning
- Industrial fluid control



WT-SERIES

Electronic Turbine Meters

FEATURES

- Pulse output standard
- 4-20 mA optional
- PVC, carbon or stainless steel
- Jewel bearings

APPLICATIONS

- Water treatment
- Cooling water monitoring
- Industrial fluid control
- Clean water



IP100/200-SERIES

Adjustable Depth Insertion

FEATURES

- 3" to 48" pipe sizes
- PVC, brass, stainless steel
- Hot tap available

APPLICATIONS

- Industrial water treatment
- Aquariums, water parks
- Clean water in large pipe



Magmeters



EX800-SERIES
Insertion Magmeters

FEATURES

- 1" to 12" pipe sizes
- PVC, brass or stainless steel
- Externally powered
- Low maintenance

APPLICATIONS

- Industrial water/wastewater
- Conductive fluids
- Changing viscosities
- Poor quality water



PE202
Low-Flow Magmeters

FEATURES

- ¼" to ¾" sizes
- Chemical and corrosion resistant
- Externally powered
- No straight pipe requirement
- Pulse and/or 4-20 mA output

APPLICATIONS

- Chemical injection/verification
- Low-flow water applications
- Pulsating flows
- Varying viscosities



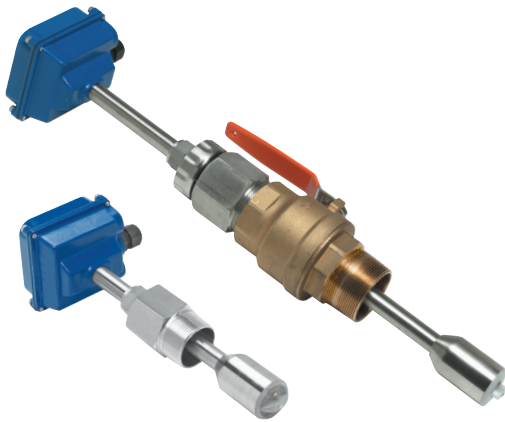
WMP-SERIES
Plastic-Bodied Magmeters

FEATURES

- 1" to 3" sizes
- External or battery powered
- 2:1 straight pipe
- Pulse output (101 only)

APPLICATIONS

- Well water
- Cooling tower deducts
- Industrial water/wastewater
- Municipal water/wastewater
- Grey water monitoring



EX100/200-SERIES
Adjustable Depth Insertion Magmeters

FEATURES

- 3" to 48" pipe sizes (up to 72" optional)
- Brass or stainless steel
- Externally powered
- Hot-tap available
- Reverse flow output available

APPLICATIONS

- Clean or dirty fluids
- Municipal water/wastewater
- Industrial water/wastewater
- Conductive fluids
- Aquariums & water parks



Since 1990, Seametrics has been providing high value flow meters and controls. Our guiding principles have been simplicity, durability and affordability. Over the years our product line has expanded from inexpensive mechanical meters to a highly accurate family of affordable electromagnetic flow meters to fit a wide range of applications.



IMAG-SERIES
Flanged Magmeters

FEATURES

- 3" to 12" sizes
- Programmable Indicator
- 2:1 straight pipe
- Pulse Output (4-20 mA optional)
- IP68 & NSF

APPLICATIONS

- Water/wastewater
- Municipalities
- Treatment plants
- Pump stations
- Cooling towers
- Packaged plants
- Filtration systems

Technology with a Mission